

Datasheet for ABIN1531729
anti-TERT antibody (pSer227)



[Go to Product page](#)

2 Images

Overview

Quantity:	100 µL
Target:	TERT
Binding Specificity:	AA 196-245, pSer227
Reactivity:	Human
Host:	Rabbit
Clonality:	Polyclonal
Conjugate:	This TERT antibody is un-conjugated
Application:	ELISA, Immunofluorescence (IF)

Product Details

Immunogen:	The antiserum was produced against synthesized peptide derived from human Telomerase around the phosphorylation site of Ser227.
Isotype:	IgG
Specificity:	Telomerase (Phospho-Ser227) Antibody detects endogenous levels of Telomerase only when phosphorylated at Ser227. PhosphorylationH:S227
Purification:	The antibody was purified from rabbit antiserum by affinity-chromatography using phospho peptide. The antibody against non-phospho peptide was removed by chromatography using corresponding non-phospho peptide.
Purity:	> 95 %

Target Details

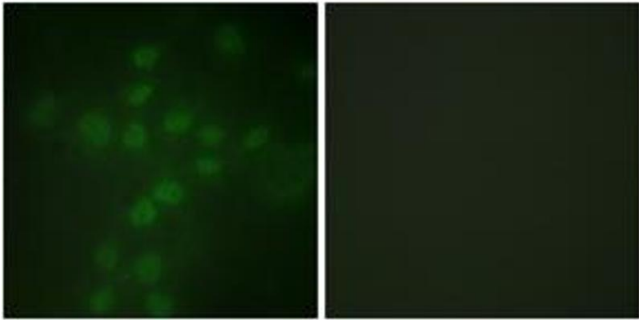
Target:	TERT
Alternative Name:	Telomerase (TERT Products)
Background:	Synonyms: EST2, HEST2, TCS1, Telomerase catalytic subunit, Telomerase reverse transcriptase, TERT, TRT NCBI Gene Symbol: TERT
Molecular Weight:	126 kDa
Gene ID:	7015
OMIM:	127550
UniProt:	O14746
Pathways:	Telomere Maintenance

Application Details

Application Notes:	IF: 1:100~1:500 ELISA: 1:1000
Comment:	Unigene-Number: Hs.492203 (NCBI Gene Symbol: TERT)
Restrictions:	For Research Use only

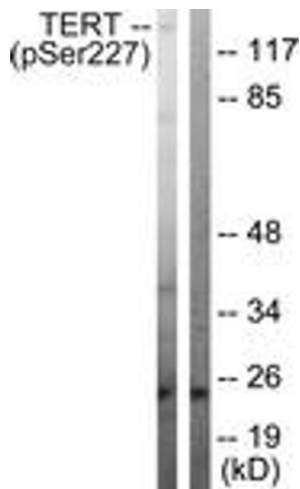
Handling

Format:	Liquid
Concentration:	1 mg/mL
Buffer:	phosphate buffered saline (without Mg ²⁺ and Ca ²⁺), pH 7.4, 150 mM NaCl, 0.02 % sodium azide and 50 % glycerol.
Preservative:	Sodium azide
Precaution of Use:	This product contains sodium azide: a POISONOUS AND HAZARDOUS SUBSTANCE which should be handled by trained staff only.
Storage:	-20 °C
Storage Comment:	Stable at -20°C for at least 1 year.
Expiry Date:	12 months



Immunofluorescence

Image 1. Immunofluorescence analysis of HuvEc cells, using Telomerase (Phospho-Ser227) Antibody. The picture on the right is treated with the synthesized peptide.



Western Blotting

Image 2.