

Datasheet for ABIN1531733
anti-ARHGDI A antibody (pSer174)[Go to Product page](#)

2 Images

1 Publication

Overview

Quantity:	100 µg
Target:	ARHGDI A
Binding Specificity:	AA 140-189, pSer174
Reactivity:	Human, Mouse, Rat
Host:	Rabbit
Clonality:	Polyclonal
Conjugate:	This ARHGDI A antibody is un-conjugated
Application:	Western Blotting (WB), ELISA, Immunohistochemistry (IHC)

Product Details

Immunogen:	The antiserum was produced against synthesized peptide derived from human ARHGDI A around the phosphorylation site of Ser174.
Isotype:	IgG
Specificity:	ARHGDI A (Phospho-Ser174) Antibody detects endogenous levels of ARHGDI A only when phosphorylated at Ser174. PhosphorylationH:S174 M:S174 R:S174
Purification:	The antibody was purified from rabbit antiserum by affinity-chromatography using phospho peptide. The antibody against non-phospho peptide was removed by chromatography using corresponding non-phospho peptide.
Purity:	> 95 %

Target Details

Target:	ARHGDIA
Alternative Name:	ARHGDIA (ARHGDIA Products)
Background:	Synonyms: GDIR, Rho GDI 1, Rho GDP-dissociation inhibitor 1, Rho-GDI alpha NCBI Gene Symbol: ARHGDIA
Molecular Weight:	23 kDa
Gene ID:	396
OMIM:	601925
UniProt:	P52565
Pathways:	Neurotrophin Signaling Pathway

Application Details

Application Notes:	WB: 1:500~1:1000 IHC: 1:50~1:100 ELISA: 1:10000
Comment:	Unigene-Number: Hs.159161 (NCBI Gene Symbol: ARHGDIA)
Restrictions:	For Research Use only

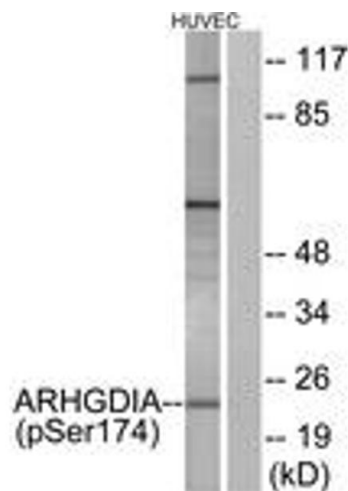
Handling

Format:	Liquid
Concentration:	1 mg/mL
Buffer:	phosphate buffered saline (without Mg ²⁺ and Ca ²⁺), pH 7.4, 150 mM NaCl, 0.02 % sodium azide and 50 % glycerol.
Preservative:	Sodium azide
Precaution of Use:	This product contains sodium azide: a POISONOUS AND HAZARDOUS SUBSTANCE which should be handled by trained staff only.
Storage:	-20 °C
Storage Comment:	Stable at -20°C for at least 1 year.
Expiry Date:	12 months

Publications

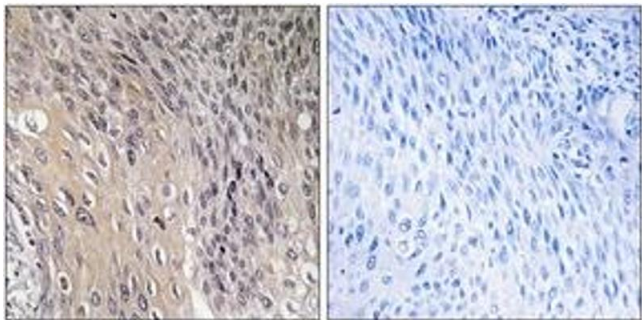
Product cited in:	Xiao, Lin, Ke, Lin, Lin, Lin: "14-3-3 τ promotes breast cancer invasion and metastasis by inhibiting
-------------------	---

Images



Western Blotting

Image 1. Western blot analysis of extracts from HuvEc cells treated with EGF 200ng/ml 30', using ARHGDIa (Phospho-Ser174) Antibody. The lane on the right is treated with the synthesized peptide.



Immunohistochemistry

Image 2. Immunohistochemistry analysis of paraffin-embedded human cervix carcinoma, using ARHGDIa (Phospho-Ser174) Antibody. The picture on the right is treated with the synthesized peptide.