

Datasheet for ABIN1531738
anti-DRP2 antibody (pThr514)

3 Images

[Go to Product page](#)

Overview

Quantity:	100 µg
Target:	DRP2
Binding Specificity:	AA 480-529, pThr514
Reactivity:	Human, Mouse, Rat
Host:	Rabbit
Clonality:	Polyclonal
Conjugate:	This DRP2 antibody is un-conjugated
Application:	Western Blotting (WB), ELISA, Immunohistochemistry (IHC), Immunofluorescence (IF)

Product Details

Immunogen:	The antiserum was produced against synthesized peptide derived from human DRP-2 around the phosphorylation site of Thr514.
Isotype:	IgG
Specificity:	DRP-2 (Phospho-Thr514) Antibody detects endogenous levels of DRP-2 only when phosphorylated at Thr514. PhosphorylationH:T514 M:T514 R:T514
Purification:	The antibody was purified from rabbit antiserum by affinity-chromatography using phospho peptide. The antibody against non-phospho peptide was removed by chromatography using corresponding non-phospho peptide.
Purity:	> 95 %

Target Details

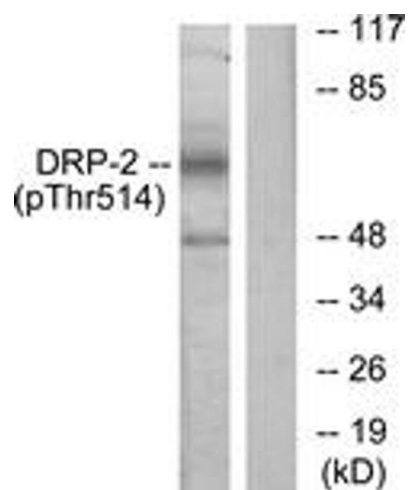
Target:	DRP2
Alternative Name:	DRP-2 (DRP2 Products)
Background:	Synonyms: Collapsin response mediator protein 2, CRMP2, Dihydropyrimidinase related protein-2, DPYL2, DPYSL2, DRP-2, N2A3, TOAD-64, Turned on after division, 64 kDa protein, ULIP 2 protein, ULIP2 NCBI Gene Symbol: DPYSL2
Molecular Weight:	62 kDa
Gene ID:	1808
OMIM:	602463
UniProt:	Q16555

Application Details

Application Notes:	WB: 1:500~1:1000 IHC: 1:50~1:100 IF: 1:100~1:500 ELISA: 1:5000
Comment:	Unigene-Number: Hs.173381 (NCBI Gene Symbol: DPYSL2)
Restrictions:	For Research Use only

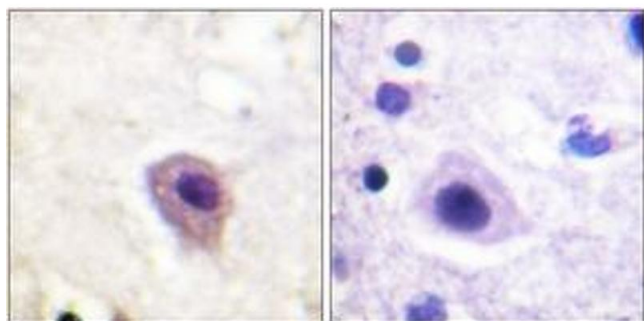
Handling

Format:	Liquid
Concentration:	1 mg/mL
Buffer:	phosphate buffered saline (without Mg ²⁺ and Ca ²⁺), pH 7.4, 150 mM NaCl, 0.02 % sodium azide and 50 % glycerol.
Preservative:	Sodium azide
Precaution of Use:	This product contains sodium azide: a POISONOUS AND HAZARDOUS SUBSTANCE which should be handled by trained staff only.
Storage:	-20 °C
Storage Comment:	Stable at -20°C for at least 1 year.
Expiry Date:	12 months



Western Blotting

Image 1. Western blot analysis of extracts from NIH-3T3 cells treated with PMA 125ng/ml 30', using DRP-2 (Phospho-Thr514) Antibody. The lane on the right is treated with the synthesized peptide.



Immunohistochemistry

Image 2. Immunohistochemistry analysis of paraffin-embedded human brain, using DRP-2 (Phospho-Thr514) Antibody. The picture on the right is treated with the synthesized peptide.



Immunofluorescence

Image 3. Immunofluorescence analysis of HeLa cells, using DRP-2 (Phospho-Thr514) Antibody. The picture on the right is treated with the synthesized peptide.