

Datasheet for ABIN1531743
anti-KIF2C antibody (pSer95)[Go to Product page](#)

2 Images

Overview

Quantity:	100 µg
Target:	KIF2C
Binding Specificity:	AA 61-110, pSer95
Reactivity:	Human, Mouse
Host:	Rabbit
Clonality:	Polyclonal
Conjugate:	This KIF2C antibody is un-conjugated
Application:	Western Blotting (WB), Immunofluorescence (IF), ELISA

Product Details

Immunogen:	The antiserum was produced against synthesized peptide derived from human KIF2C around the phosphorylation site of Ser95.
Isotype:	IgG
Specificity:	KIF2C (Phospho-Ser95) Antibody detects endogenous levels of KIF2C only when phosphorylated at Ser95. PhosphorylationH:S95 M:S92
Purification:	The antibody was purified from rabbit antiserum by affinity-chromatography using phospho peptide. The antibody against non-phospho peptide was removed by chromatography using corresponding non-phospho peptide.
Purity:	> 95 %

Target Details

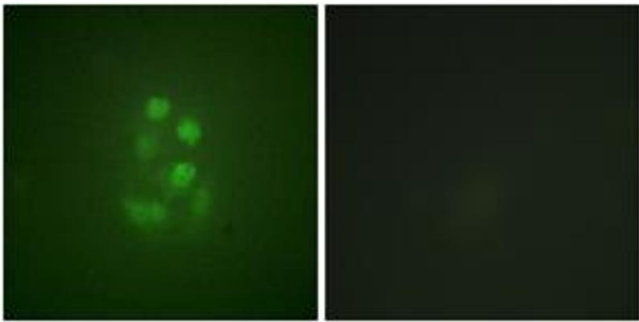
Target:	KIF2C
Alternative Name:	KIF2C (KIF2C Products)
Background:	Synonyms: KF2C, KIF2C, KNSL6, Kinesin-like protein 6, Kinesin-like protein KIF2C, Mitotic centromere-associated kinesin NCBI Gene Symbol: KIF2C
Molecular Weight:	81 kDa
Gene ID:	11004
OMIM:	604538
UniProt:	Q99661
Pathways:	Microtubule Dynamics

Application Details

Application Notes:	WB: 1:500~1:1000 IF: 1:100~1:500 ELISA: 1:1000
Comment:	Unigene-Number: Hs.714765 (NCBI Gene Symbol: KIF2C)
Restrictions:	For Research Use only

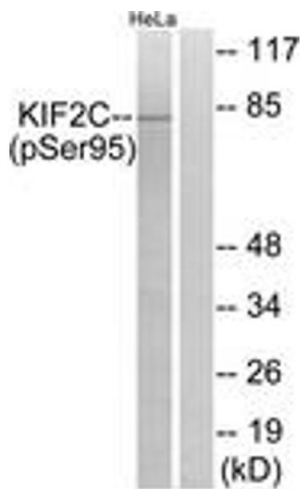
Handling

Format:	Liquid
Concentration:	1 mg/mL
Buffer:	phosphate buffered saline (without Mg ²⁺ and Ca ²⁺), pH 7.4, 150 mM NaCl, 0.02 % sodium azide and 50 % glycerol.
Preservative:	Sodium azide
Precaution of Use:	This product contains sodium azide: a POISONOUS AND HAZARDOUS SUBSTANCE which should be handled by trained staff only.
Storage:	-20 °C
Storage Comment:	Stable at -20°C for at least 1 year.
Expiry Date:	12 months



Immunofluorescence

Image 1. Immunofluorescence analysis of A549 cells, using KIF2C (Phospho-Ser95) Antibody. The picture on the right is treated with the synthesized peptide.



Western Blotting

Image 2. Western blot analysis of extracts from HeLa cells treated with TNF 10ng/ml 30', using KIF2C (Phospho-Ser95) Antibody. The lane on the right is treated with the synthesized peptide.