



[Go to Product page](#)

Datasheet for ABIN1531748
anti-PER2 antibody (pSer662)

2 Images

Overview

Quantity:	100 µg
Target:	PER2
Binding Specificity:	AA 636-685, pSer662
Reactivity:	Human, Mouse
Host:	Rabbit
Clonality:	Polyclonal
Conjugate:	This PER2 antibody is un-conjugated
Application:	Western Blotting (WB), ELISA, Immunohistochemistry (IHC)

Product Details

Immunogen:	The antiserum was produced against synthesized peptide derived from human Period Circadian Protein 2 around the phosphorylation site of Ser662.
Isotype:	IgG
Specificity:	Period Circadian Protein 2 (Phospho-Ser662) Antibody detects endogenous levels of Period Circadian Protein 2 only when phosphorylated at Ser662. PhosphorylationH:S662 M:S659
Purification:	The antibody was purified from rabbit antiserum by affinity-chromatography using phospho peptide. The antibody against non-phospho peptide was removed by chromatography using corresponding non-phospho peptide.
Purity:	> 95 %

Target Details

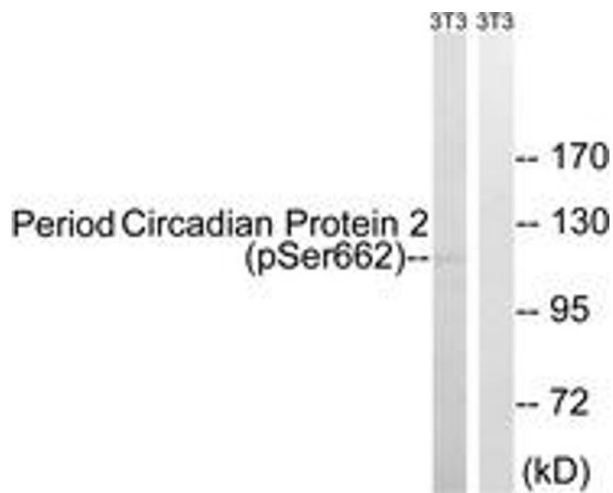
Target:	PER2
Alternative Name:	Period Circadian Protein 2 (PER2 Products)
Background:	Synonyms: KIAA0347, Period circadian protein 2, Mper2, Per2 NCBI Gene Symbol: PER2
Molecular Weight:	136 kDa
Gene ID:	8864
OMIM:	603426
UniProt:	O15055

Application Details

Application Notes:	WB: 1:500~1:1000 IHC: 1:50~1:100 ELISA: 1:5000
Comment:	Unigene-Number: Hs.58756 (NCBI Gene Symbol: PER2)
Restrictions:	For Research Use only

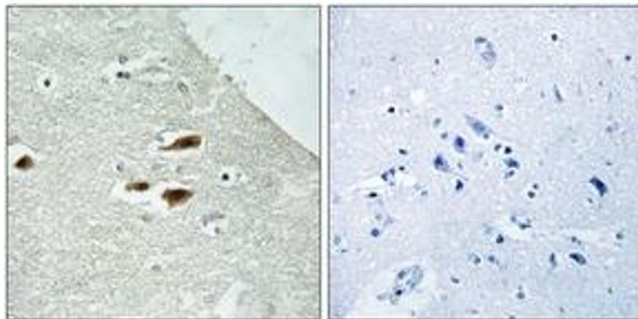
Handling

Format:	Liquid
Concentration:	1 mg/mL
Buffer:	phosphate buffered saline (without Mg ²⁺ and Ca ²⁺), pH 7.4, 150 mM NaCl, 0.02 % sodium azide and 50 % glycerol.
Preservative:	Sodium azide
Precaution of Use:	This product contains sodium azide: a POISONOUS AND HAZARDOUS SUBSTANCE which should be handled by trained staff only.
Storage:	-20 °C
Storage Comment:	Stable at -20°C for at least 1 year.
Expiry Date:	12 months



Western Blotting

Image 1. Western blot analysis of extracts from NIH-3T3 cells treated with PMA 125ng/ml 30', using Period Circadian Protein 2 (Phospho-Ser662) Antibody. The lane on the right is treated with the synthesized peptide.



Immunohistochemistry

Image 2. Immunohistochemistry analysis of paraffin-embedded human brain, using Period Circadian Protein 2 (Phospho-Ser662) Antibody. The picture on the right is treated with the synthesized peptide.