

Datasheet for ABIN1531792
anti-CAMK2B antibody (pThr286)



[Go to Product page](#)

3 Images

Overview

Quantity:	100 µL
Target:	CAMK2B
Binding Specificity:	AA 256-305, pThr286
Reactivity:	Human, Mouse, Rat
Host:	Rabbit
Clonality:	Polyclonal
Conjugate:	This CAMK2B antibody is un-conjugated
Application:	Western Blotting (WB), ELISA, Immunohistochemistry (IHC), Immunofluorescence (IF)

Product Details

Immunogen:	The antiserum was produced against synthesized peptide derived from human CaMK2 around the phosphorylation site of Thr286.
Isotype:	IgG
Specificity:	CaMK2 (Phospho-Thr286) Antibody detects endogenous levels of CaMK2 only when phosphorylated at Thr286. PhosphorylationH:T286/287 M:T286/287 R:T286/287
Purification:	The antibody was purified from rabbit antiserum by affinity-chromatography using phospho peptide. The antibody against non-phospho peptide was removed by chromatography using corresponding non-phospho peptide.
Purity:	> 95 %

Target Details

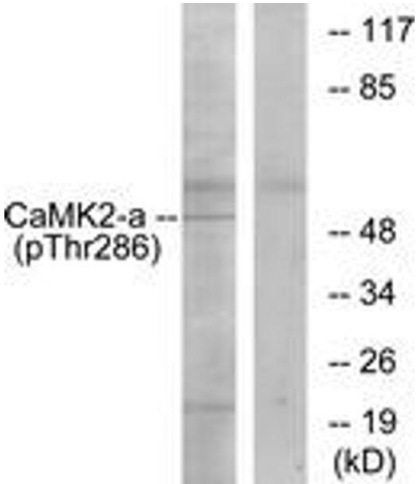
Target:	CAMK2B
Alternative Name:	CaMK2 (CaMK2B Products)
Background:	Synonyms: CAMK2A, CaM-kinase II alpha chain, CaMK-II alpha subunit, CaMKII-alpha, Calcium/calmodulin-dependent protein kinase type II alpha chain, KCC2A, kinase CaMK2-alpha NCBI Gene Symbol: CAMK2D
Molecular Weight:	54 kDa
Gene ID:	817
OMIM:	114078
UniProt:	Q9UQM7 , Q13557
Pathways:	WNT Signaling , Interferon-gamma Pathway , Myometrial Relaxation and Contraction , Regulation of G-Protein Coupled Receptor Protein Signaling , Smooth Muscle Cell Migration , Regulation of long-term Neuronal Synaptic Plasticity

Application Details

Application Notes:	WB: 1:500~1:1000 IHC: 1:50~1:100 IF: 1:100~1:500 ELISA: 1:10000
Comment:	Unigene-Number: Hs.143535, Hs.144114 (NCBI Gene Symbol: CAMK2D)
Restrictions:	For Research Use only

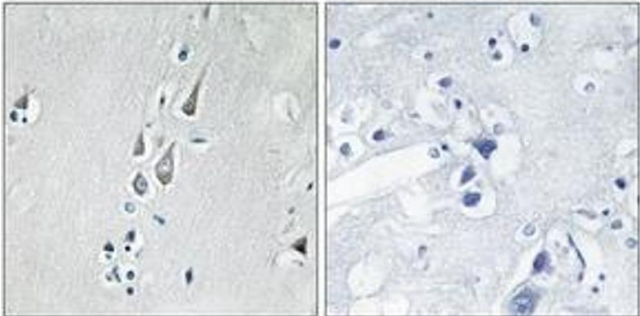
Handling

Format:	Liquid
Concentration:	1 mg/mL
Buffer:	phosphate buffered saline (without Mg2+ and Ca2+), pH 7.4, 150 mM NaCl, 0.02 % sodium azide and 50 % glycerol.
Preservative:	Sodium azide
Precaution of Use:	This product contains sodium azide: a POISONOUS AND HAZARDOUS SUBSTANCE which should be handled by trained staff only.
Storage:	-20 °C
Storage Comment:	Stable at -20°C for at least 1 year.
Expiry Date:	12 months



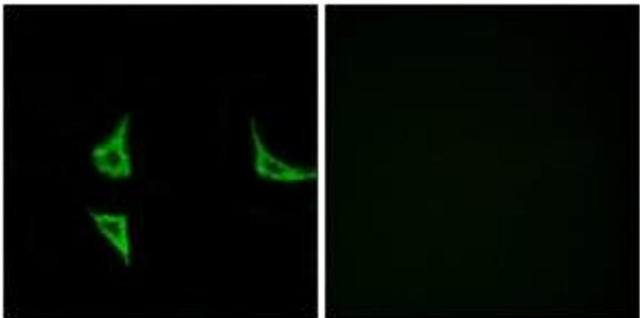
Western Blotting

Image 1. Western blot analysis of extracts from K562 cells, using CaMK2 (Phospho-Thr286) Antibody. The lane on the right is treated with the synthesized peptide.



Immunohistochemistry

Image 2. Immunohistochemistry analysis of paraffin-embedded human brain, using CaMK2 (Phospho-Thr286) Antibody. The picture on the right is treated with the synthesized peptide.



Immunofluorescence

Image 3. Immunofluorescence analysis of COS7 cells, using CaMK2 (Phospho-Thr286) Antibody. The picture on the right is treated with the synthesized peptide.