

Datasheet for ABIN1531853
anti-GRIA2 antibody (pSer880)



[Go to Product page](#)

2 Images

Overview

Quantity:	100 µL
Target:	GRIA2
Binding Specificity:	AA 834-883, pSer880
Reactivity:	Human, Rat, Mouse
Host:	Rabbit
Clonality:	Polyclonal
Conjugate:	This GRIA2 antibody is un-conjugated
Application:	Western Blotting (WB), Immunohistochemistry (IHC), ELISA

Product Details

Immunogen:	The antiserum was produced against synthesized peptide derived from human GluR2 around the phosphorylation site of Ser880.
Isotype:	IgG
Specificity:	GluR2 (Phospho-Ser880) Antibody detects endogenous levels of GluR2 only when phosphorylated at Ser880. PhosphorylationH:S880 M:S880 R:S880
Purification:	The antibody was purified from rabbit antiserum by affinity-chromatography using phospho peptide. The antibody against non-phospho peptide was removed by chromatography using corresponding non-phospho peptide.
Purity:	> 95 %

Target Details

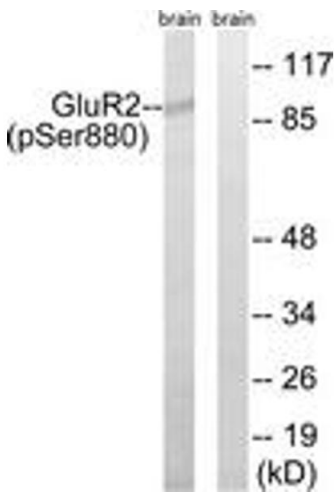
Target:	GRIA2
Alternative Name:	GluR2 (GRIA2 Products)
Background:	Synonyms: Glutamate receptor 2, GluR-2, GluR-B, GluR-K2, Glutamate receptor ionotropic, AMPA 2, AMPA-selective glutamate receptor 2, GLUR2 NCBI Gene Symbol: GRIA2
Molecular Weight:	98 kDa
Gene ID:	2891
OMIM:	138247
UniProt:	P42262
Pathways:	PI3K-Akt Signaling

Application Details

Application Notes:	WB: 1:500~1:1000 IHC: 1:50~1:100 ELISA: 1:20000
Comment:	Unigene-Number: Hs.32763 (NCBI Gene Symbol: GRIA2)
Restrictions:	For Research Use only

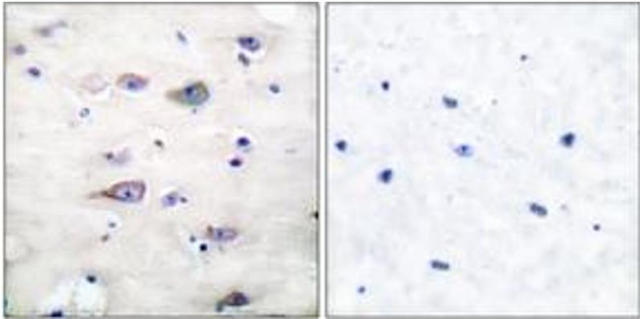
Handling

Format:	Liquid
Concentration:	1 mg/mL
Buffer:	phosphate buffered saline (without Mg2+ and Ca2+), pH 7.4, 150 mM NaCl, 0.02 % sodium azide and 50 % glycerol.
Preservative:	Sodium azide
Precaution of Use:	This product contains sodium azide: a POISONOUS AND HAZARDOUS SUBSTANCE which should be handled by trained staff only.
Storage:	-20 °C
Storage Comment:	Stable at -20°C for at least 1 year.
Expiry Date:	12 months



Western Blotting

Image 1. Western blot analysis of extracts from mouse brain, using GluR2 (Phospho-Ser880) Antibody. The lane on the right is treated with the synthesized peptide.



Immunohistochemistry

Image 2. Immunohistochemistry analysis of paraffin-embedded human brain, using GluR2 (Phospho-Ser880) Antibody. The picture on the right is treated with the synthesized peptide.