

Datasheet for ABIN1531858  
**anti-HDAC8 antibody (pSer39)**



[Go to Product page](#)

2 Images

## Overview

Quantity:	100 µL
Target:	HDAC8
Binding Specificity:	AA 5-54, pSer39
Reactivity:	Human, Mouse, Rat
Host:	Rabbit
Clonality:	Polyclonal
Conjugate:	This HDAC8 antibody is un-conjugated
Application:	ELISA, Western Blotting (WB), Immunohistochemistry (IHC)

## Product Details

Immunogen:	The antiserum was produced against synthesized peptide derived from human HDAC8 around the phosphorylation site of Ser39.
Isotype:	IgG
Specificity:	HDAC8 (Phospho-Ser39) Antibody detects endogenous levels of HDAC8 only when phosphorylated at Ser39. PhosphorylationH:S39 M:S39 R:S39
Purification:	The antibody was purified from rabbit antiserum by affinity-chromatography using phospho peptide. The antibody against non-phospho peptide was removed by chromatography using corresponding non-phospho peptide.
Purity:	> 95 %

## Target Details

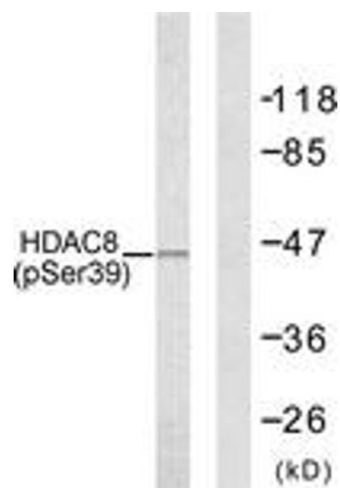
Target:	HDAC8
Alternative Name:	HDAC8 ( <a href="#">HDAC8 Products</a> )
Background:	Synonyms: Probable G-protein coupled receptor 87, G-protein coupled receptor 95, GPR87, GPR95, FKSG78, NCBI Gene Symbol: HDAC8
Molecular Weight:	41 kDa
Gene ID:	55869
OMIM:	300269
UniProt:	<a href="#">Q9BY41</a>
Pathways:	<a href="#">Cellular Glucan Metabolic Process</a>

## Application Details

Application Notes:	WB: 1:500~1:1000 IHC: 1:50~1:100 ELISA: 1:20000
Comment:	Unigene-Number: Hs.310536 (NCBI Gene Symbol: HDAC8)
Restrictions:	For Research Use only

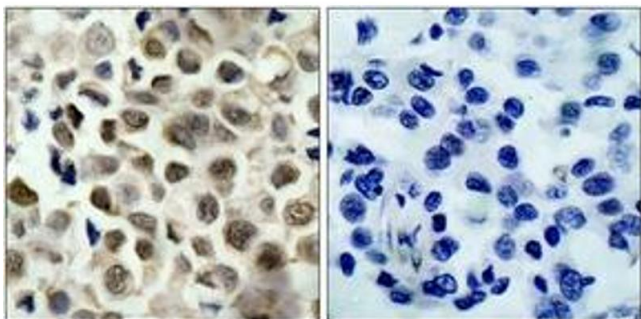
## Handling

Format:	Liquid
Concentration:	1 mg/mL
Buffer:	phosphate buffered saline (without Mg <sup>2+</sup> and Ca <sup>2+</sup> ), pH 7.4, 150 mM NaCl, 0.02 % sodium azide and 50 % glycerol.
Preservative:	Sodium azide
Precaution of Use:	This product contains sodium azide: a POISONOUS AND HAZARDOUS SUBSTANCE which should be handled by trained staff only.
Storage:	-20 °C
Storage Comment:	Stable at -20°C for at least 1 year.
Expiry Date:	12 months



### Western Blotting

**Image 1.** Western blot analysis of extracts from NIH-3T3 cells, using HDAC8 (Phospho-Ser39) Antibody. The lane on the right is treated with the synthesized peptide.



### Immunohistochemistry

**Image 2.** Immunohistochemistry analysis of paraffin-embedded human lung carcinoma, using HDAC8 (Phospho-Ser39) Antibody. The picture on the right is treated with the synthesized peptide.