



[Go to Product page](#)

Datasheet for ABIN1531863

anti-Histone H3.1 antibody (pSer10)

2 Images

Overview

Quantity:	100 µL
Target:	Histone H3.1 (HIST1H3B)
Binding Specificity:	AA 1-50, pSer10
Reactivity:	Human, Mouse, Rat
Host:	Rabbit
Clonality:	Polyclonal
Conjugate:	This Histone H3.1 antibody is un-conjugated
Application:	Western Blotting (WB), Immunohistochemistry (IHC), ELISA

Product Details

Immunogen:	The antiserum was produced against synthesized peptide derived from human Histone H3.1 around the phosphorylation site of Ser10.
Isotype:	IgG
Specificity:	Histone H3.1 (Phospho-Ser10) Antibody detects endogenous levels of Histone H3.1 only when phosphorylated at Ser10. PhosphorylationH:S10 M:S10 R:S10
Purification:	The antibody was purified from rabbit antiserum by affinity-chromatography using phospho peptide. The antibody against non-phospho peptide was removed by chromatography using corresponding non-phospho peptide.
Purity:	> 95 %

Target Details

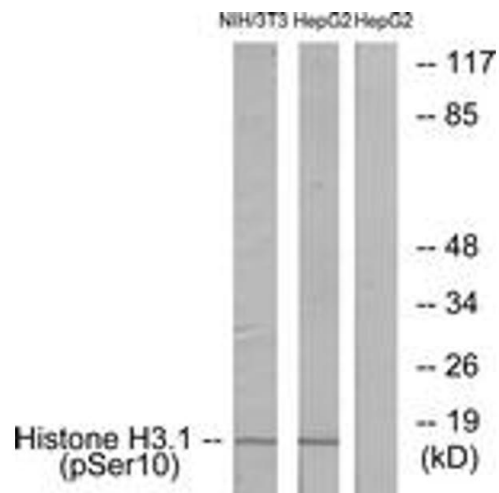
Target:	Histone H3.1 (HIST1H3B)
Alternative Name:	Histone H3.1 (HIST1H3B Products)
Background:	Synonyms: H3/a, H3/c, H3/d, H3/f, H3/h, H3/i, H3/j, H3/k, H3/l, H31, HIST1H3A, histone H3.1 NCBI Gene Symbol: HIST1H3A
Molecular Weight:	15 kDa
Gene ID:	8350, 8351, 8352
OMIM:	602810
UniProt:	P68431 , Q71DI3 , P84243

Application Details

Application Notes:	WB: 1:500~1:1000 IHC: 1:50~1:100 ELISA: 1:10000
Comment:	Unigene-Number: Hs.132854, Hs.247813, Hs.247814, Hs.248176, Hs.443021, Hs.484990, Hs.532144, Hs.533292, Hs.546315, Hs.586261, Hs.591778 (NCBI Gene Symbol: HIST1H3A)
Restrictions:	For Research Use only

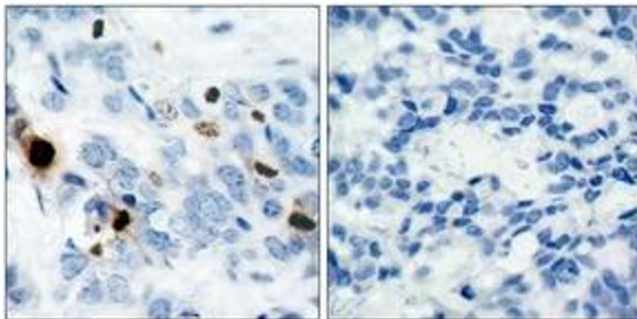
Handling

Format:	Liquid
Concentration:	1 mg/mL
Buffer:	phosphate buffered saline (without Mg ²⁺ and Ca ²⁺), pH 7.4, 150 mM NaCl, 0.02 % sodium azide and 50 % glycerol.
Preservative:	Sodium azide
Precaution of Use:	This product contains sodium azide: a POISONOUS AND HAZARDOUS SUBSTANCE which should be handled by trained staff only.
Storage:	-20 °C
Storage Comment:	Stable at -20°C for at least 1 year.
Expiry Date:	12 months



Western Blotting

Image 1. Western blot analysis of extracts from NIH/3T3 cells and HepG2 cells, using Histone H3.1 (Phospho-Ser10) Antibody. The lane on the right is treated with the synthesized peptide.



Immunohistochemistry

Image 2. Immunohistochemistry analysis of paraffin-embedded human breast carcinoma, using Histone H3.1 (Phospho-Ser10) Antibody. The picture on the right is treated with the synthesized peptide.