



Datasheet for ABIN1531876 anti-IRS1 antibody (pSer307)



[Go to Product page](#)

3 Images

1 Publication

Overview

Quantity:	100 µL
Target:	IRS1
Binding Specificity:	AA 274-323, pSer307
Reactivity:	Human, Mouse, Rat
Host:	Rabbit
Clonality:	Polyclonal
Conjugate:	This IRS1 antibody is un-conjugated
Application:	Western Blotting (WB), Immunohistochemistry (IHC), ELISA, Immunofluorescence (IF)

Product Details

Immunogen:	The antiserum was produced against synthesized peptide derived from human IRS-1 around the phosphorylation site of Ser307.
Isotype:	IgG
Specificity:	IRS-1 (Phospho-Ser307) Antibody detects endogenous levels of IRS-1 only when phosphorylated at Ser307. PhosphorylationH:S307 M:S302 R:S302
Purification:	The antibody was purified from rabbit antiserum by affinity-chromatography using phospho peptide. The antibody against non-phospho peptide was removed by chromatography using corresponding non-phospho peptide.
Purity:	> 95 %

Target Details

Target:	IRS1
Alternative Name:	IRS-1 (IRS1 Products)
Background:	Synonyms: Insulin receptor substrate-1, IRS-1, IRS1 NCBI Gene Symbol: IRS1
Molecular Weight:	131 kDa
Gene ID:	3667
OMIM:	125853
UniProt:	P35568
Pathways:	Fc-epsilon Receptor Signaling Pathway , EGFR Signaling Pathway , Neurotrophin Signaling Pathway , Positive Regulation of Peptide Hormone Secretion , Hormone Transport , Negative Regulation of Hormone Secretion , Response to Growth Hormone Stimulus , Carbohydrate Homeostasis , Regulation of Carbohydrate Metabolic Process

Application Details

Application Notes:	WB: 1:500~1:1000 IHC: 1:50~1:100 IF: 1:100~1:500 ELISA: 1:10000
Comment:	Unigene-Number: Hs.471508 (NCBI Gene Symbol: IRS1)
Restrictions:	For Research Use only

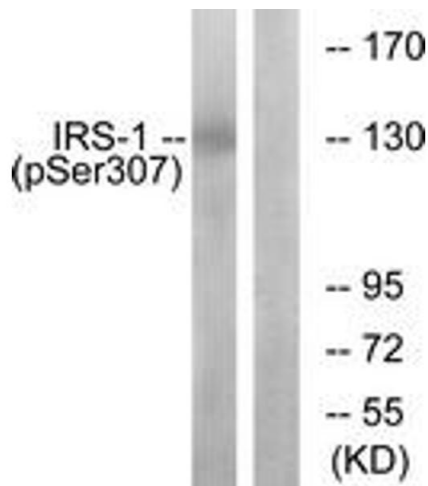
Handling

Format:	Liquid
Concentration:	1 mg/mL
Buffer:	phosphate buffered saline (without Mg ²⁺ and Ca ²⁺), pH 7.4, 150 mM NaCl, 0.02 % sodium azide and 50 % glycerol.
Preservative:	Sodium azide
Precaution of Use:	This product contains sodium azide: a POISONOUS AND HAZARDOUS SUBSTANCE which should be handled by trained staff only.
Storage:	-20 °C
Storage Comment:	Stable at -20°C for at least 1 year.
Expiry Date:	12 months

Product cited in:

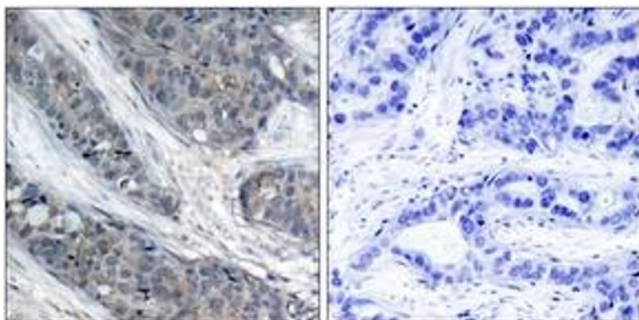
Simon-Szabó, Kokas, Mandl, Kéri, Csala: "Metformin attenuates palmitate-induced endoplasmic reticulum stress, serine phosphorylation of IRS-1 and apoptosis in rat insulinoma cells." in: **PLoS ONE**, Vol. 9, Issue 6, pp. e97868, (2014) ([PubMed](#)).

Images



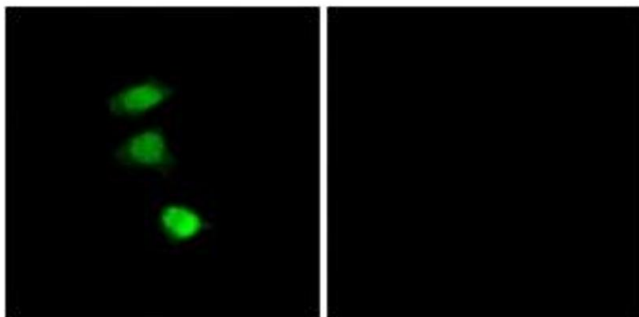
Western Blotting

Image 1. Western blot analysis of extracts from K562 cells, using IRS-1 (Phospho-Ser307) Antibody. The lane on the right is treated with the synthesized peptide.



Immunohistochemistry

Image 2. Immunohistochemistry analysis of paraffin-embedded human breast carcinoma, using IRS-1 (Phospho-Ser307) Antibody. The picture on the right is treated with the synthesized peptide.



Immunofluorescence

Image 3. Immunofluorescence analysis of COS7 cells, using IRS-1 (Phospho-Ser307) Antibody. The picture on the right is treated with the synthesized peptide.