

Datasheet for ABIN1531893
anti-JunD antibody (pSer255)



[Go to Product page](#)

2 Images

Overview

Quantity:	100 µL
Target:	JunD (JUND)
Binding Specificity:	AA 222-271, pSer255
Reactivity:	Human, Rat, Mouse
Host:	Rabbit
Clonality:	Polyclonal
Conjugate:	This JunD antibody is un-conjugated
Application:	Western Blotting (WB), ELISA, Immunohistochemistry (IHC), Immunoprecipitation (IP)

Product Details

Immunogen:	The antiserum was produced against synthesized peptide derived from human JunD around the phosphorylation site of Ser255.
Isotype:	IgG
Specificity:	JunD (Phospho-Ser255) Antibody detects endogenous levels of JunD only when phosphorylated at Ser255. PhosphorylationH:S255 M:S249 R:S249
Purification:	The antibody was purified from rabbit antiserum by affinity-chromatography using phospho peptide. The antibody against non-phospho peptide was removed by chromatography using corresponding non-phospho peptide.
Purity:	> 95 %

Target Details

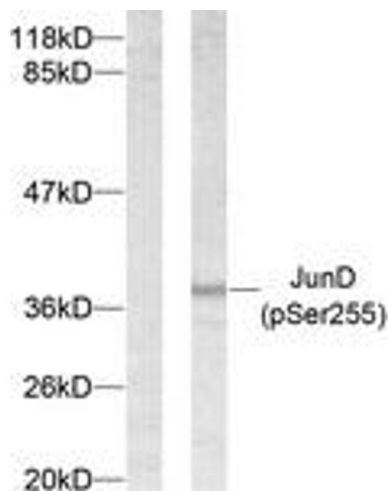
Target:	JunD (JUND)
Alternative Name:	JunD (JUND Products)
Background:	Synonyms: Transcription factor jun-D NCBI Gene Symbol: JUND
Molecular Weight:	35 kDa
Gene ID:	3727
OMIM:	165162
UniProt:	P17535

Application Details

Application Notes:	WB: 1:500~1:1000 IHC: 1:50~1:100 ELISA: 1:20000
Comment:	Unigene-Number: Hs.2780 (NCBI Gene Symbol: JUND)
Restrictions:	For Research Use only

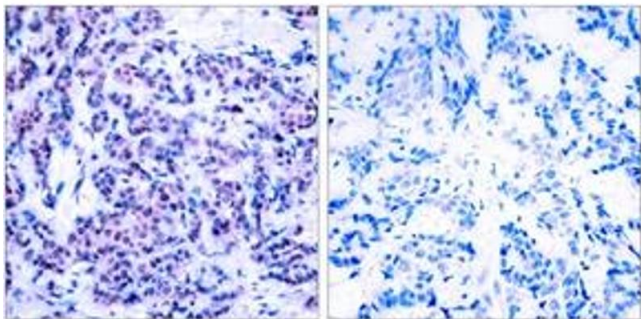
Handling

Format:	Liquid
Concentration:	1 mg/mL
Buffer:	phosphate buffered saline (without Mg ²⁺ and Ca ²⁺), pH 7.4, 150 mM NaCl, 0.02 % sodium azide and 50 % glycerol.
Preservative:	Sodium azide
Precaution of Use:	This product contains sodium azide: a POISONOUS AND HAZARDOUS SUBSTANCE which should be handled by trained staff only.
Storage:	-20 °C
Storage Comment:	Stable at -20°C for at least 1 year.
Expiry Date:	12 months



Western Blotting

Image 1. Western blot analysis of extracts from 293 cells treated with Forskolin, using JunD (Phospho-Ser255) Antibody. The lane on the left is treated with the synthesized peptide.



Immunohistochemistry

Image 2. Immunohistochemistry analysis of paraffin-embedded human breast carcinoma, using JunD (Phospho-Ser255) Antibody. The picture on the right is treated with the synthesized peptide.