

Datasheet for ABIN1531902
anti-MEK1/2 antibody (pSer218)



[Go to Product page](#)

2 Images

Overview

Quantity:	100 µL
Target:	MEK1/2 (MAP2K1/2)
Binding Specificity:	AA 189-238, pSer218
Reactivity:	Human, Mouse, Rat
Host:	Rabbit
Clonality:	Polyclonal
Conjugate:	This MEK1/2 antibody is un-conjugated
Application:	Western Blotting (WB), ELISA, Immunohistochemistry (IHC)

Product Details

Immunogen:	The antiserum was produced against synthesized peptide derived from human MEK1/2 around the phosphorylation site of Ser217.
Isotype:	IgG
Specificity:	MEK1/2 (Phospho-Ser217) Antibody detects endogenous levels of MEK1/2 only when phosphorylated at Ser217. PhosphorylationH:S218/222 M:S218/222 R:S218/222
Purification:	The antibody was purified from rabbit antiserum by affinity-chromatography using phospho peptide. The antibody against non-phospho peptide was removed by chromatography using corresponding non-phospho peptide.
Purity:	> 95 %

Target Details

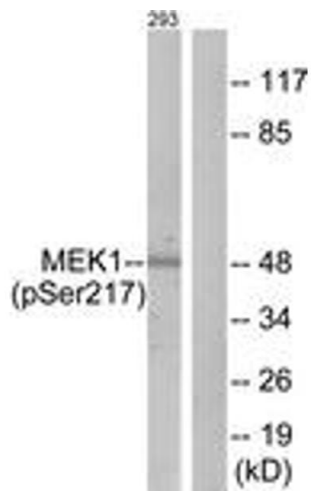
Target:	MEK1/2 (MAP2K1/2)
Alternative Name:	MEK1/2 (MAP2K1/2 Products)
Background:	Synonyms: Dual specificity mitogen-activated protein kinase kinase 1, ERK activator kinase 1, MAP kinase kinase 1, MAP2K1, MAPK/ERK kinase 1, MAPKK 1, MAPKK1, MEK1, MP2K1, PRKMK1, kinase MEK1 NCBI Gene Symbol: MAP2K2
Molecular Weight:	43 kDa
Gene ID:	5604, 5605
OMIM:	115150
UniProt:	Q02750 , P36507

Application Details

Application Notes:	WB: 1:500~1:1000 IHC: 1:50~1:100 ELISA: 1:4000
Comment:	Unigene-Number: Hs.145442, Hs.465627 (NCBI Gene Symbol: MAP2K2)
Restrictions:	For Research Use only

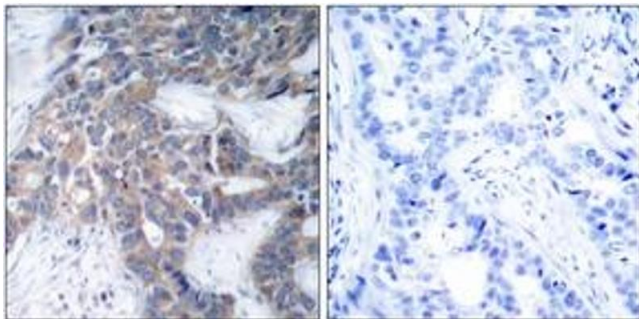
Handling

Format:	Liquid
Concentration:	1 mg/mL
Buffer:	phosphate buffered saline (without Mg ²⁺ and Ca ²⁺), pH 7.4, 150 mM NaCl, 0.02 % sodium azide and 50 % glycerol.
Preservative:	Sodium azide
Precaution of Use:	This product contains sodium azide: a POISONOUS AND HAZARDOUS SUBSTANCE which should be handled by trained staff only.
Storage:	-20 °C
Storage Comment:	Stable at -20°C for at least 1 year.
Expiry Date:	12 months



Western Blotting

Image 1. Western blot analysis of extracts from 293 cells treated with PMA 125ng/ml 30', using MEK1/2 (Phospho-Ser217) Antibody. The lane on the right is treated with the synthesized peptide.



Immunohistochemistry

Image 2. Immunohistochemistry analysis of paraffin-embedded human breast carcinoma, using MEK1/2 (Phospho-Ser217) Antibody. The picture on the right is treated with the synthesized peptide.