

Datasheet for ABIN1531963  
**anti-c-Rel antibody (pSer503)**



[Go to Product page](#)

2 Images

## Overview

Quantity:	100 µL
Target:	c-Rel
Binding Specificity:	AA 470-519, pSer503
Reactivity:	Human
Host:	Rabbit
Clonality:	Polyclonal
Conjugate:	This c-Rel antibody is un-conjugated
Application:	Western Blotting (WB), ELISA, Immunohistochemistry (IHC)

## Product Details

Immunogen:	The antiserum was produced against synthesized peptide derived from human Rel around the phosphorylation site of Ser503.
Isotype:	IgG
Specificity:	Rel (Phospho-Ser503) Antibody detects endogenous levels of Rel only when phosphorylated at Ser503. PhosphorylationH:S503
Purification:	The antibody was purified from rabbit antiserum by affinity-chromatography using phospho peptide. The antibody against non-phospho peptide was removed by chromatography using corresponding non-phospho peptide.
Purity:	> 95 %

## Target Details

---

Target:	c-Rel
Alternative Name:	Rel ( <a href="#">c-Rel Products</a> )
Background:	Synonyms: C-Rel proto-oncogene protein, C-Rel protein, REL NCBI Gene Symbol: REL
Molecular Weight:	68 kDa
Gene ID:	5966
OMIM:	164910
UniProt:	<a href="#">Q04864</a>

## Application Details

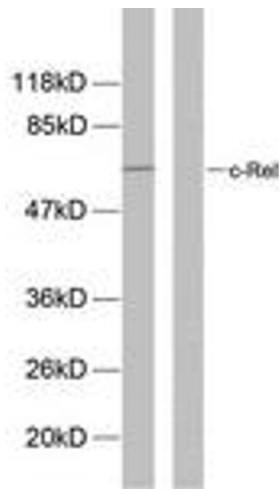
---

Application Notes:	WB: 1:500~1:1000 IHC: 1:50~1:100 ELISA: 1:5000
Comment:	Unigene-Number: Hs.631886 (NCBI Gene Symbol: REL)
Restrictions:	For Research Use only

## Handling

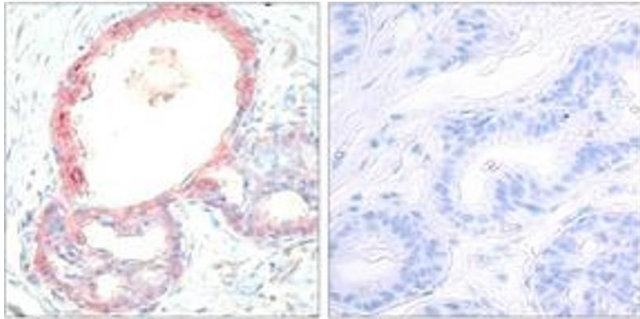
---

Format:	Liquid
Concentration:	1 mg/mL
Buffer:	phosphate buffered saline (without Mg <sup>2+</sup> and Ca <sup>2+</sup> ), pH 7.4, 150 mM NaCl, 0.02 % sodium azide and 50 % glycerol.
Preservative:	Sodium azide
Precaution of Use:	This product contains sodium azide: a POISONOUS AND HAZARDOUS SUBSTANCE which should be handled by trained staff only.
Storage:	-20 °C
Storage Comment:	Stable at -20°C for at least 1 year.
Expiry Date:	12 months



### Western Blotting

**Image 1.** Western blot analysis of extracts from MDA-MB-435 cells, using Rel (Phospho-Ser503) Antibody. The lane on the right is treated with the synthesized peptide.



### Immunohistochemistry

**Image 2.** Immunohistochemistry analysis of paraffin-embedded human breast carcinoma, using Rel (Phospho-Ser503) Antibody. The picture on the right is treated with the synthesized peptide.