

Datasheet for ABIN1531976
anti-STAT4 antibody (pTyr693)



[Go to Product page](#)

2 Images

Overview

Quantity:	100 µL
Target:	STAT4
Binding Specificity:	AA 660-709, pTyr693
Reactivity:	Human, Mouse, Rat
Host:	Rabbit
Clonality:	Polyclonal
Conjugate:	This STAT4 antibody is un-conjugated
Application:	Western Blotting (WB), Immunohistochemistry (IHC), ELISA, Immunoprecipitation (IP)

Product Details

Immunogen:	The antiserum was produced against synthesized peptide derived from human STAT4 around the phosphorylation site of Tyr693.
Isotype:	IgG
Specificity:	STAT4 (Phospho-Tyr693) Antibody detects endogenous levels of STAT4 only when phosphorylated at Tyr693. PhosphorylationH:Y693 M:Y694 R:Y693
Purification:	The antibody was purified from rabbit antiserum by affinity-chromatography using phospho peptide. The antibody against non-phospho peptide was removed by chromatography using corresponding non-phospho peptide.
Purity:	> 95 %

Target Details

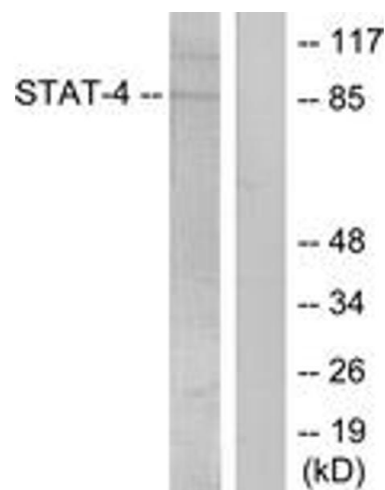
Target:	STAT4
Alternative Name:	STAT4 (STAT4 Products)
Background:	Synonyms: Signal transducer and activator of transcription 4 NCBI Gene Symbol: STAT4
Molecular Weight:	85 kDa
Gene ID:	6775
OMIM:	180300
UniProt:	Q14765
Pathways:	JAK-STAT Signaling

Application Details

Application Notes:	WB: 1:500~1:1000 IHC: 1:50~1:100 ELISA: 1:5000
Comment:	Unigene-Number: Hs.80642 (NCBI Gene Symbol: STAT4)
Restrictions:	For Research Use only

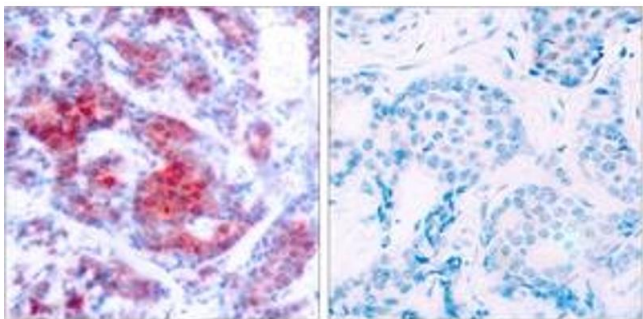
Handling

Format:	Liquid
Concentration:	1 mg/mL
Buffer:	phosphate buffered saline (without Mg2+ and Ca2+), pH 7.4, 150 mM NaCl, 0.02 % sodium azide and 50 % glycerol.
Preservative:	Sodium azide
Precaution of Use:	This product contains sodium azide: a POISONOUS AND HAZARDOUS SUBSTANCE which should be handled by trained staff only.
Storage:	-20 °C
Storage Comment:	Stable at -20°C for at least 1 year.
Expiry Date:	12 months



Western Blotting

Image 1. Western blot analysis of extracts from HeLa cells treated with IL-4, using STAT4 (Phospho-Tyr693) Antibody. The lane on the right is treated with the synthesized peptide.



Immunohistochemistry

Image 2. Immunohistochemistry analysis of paraffin-embedded human breast carcinoma, using STAT4 (Phospho-Tyr693) Antibody. The picture on the right is treated with the synthesized peptide.