

Datasheet for ABIN1531981
anti-Stathmin 1 antibody (pSer16)



[Go to Product page](#)

3 Images

Overview

Quantity:	100 µL
Target:	Stathmin 1 (STMN1)
Binding Specificity:	AA 5-54, pSer16
Reactivity:	Human, Mouse, Rat
Host:	Rabbit
Clonality:	Polyclonal
Conjugate:	This Stathmin 1 antibody is un-conjugated
Application:	Western Blotting (WB), Immunohistochemistry (IHC), ELISA, Immunofluorescence (IF)

Product Details

Immunogen:	The antiserum was produced against synthesized peptide derived from human Stathmin 1 around the phosphorylation site of Ser15.
Isotype:	IgG
Specificity:	Stathmin 1 (Phospho-Ser15) Antibody detects endogenous levels of Stathmin 1 only when phosphorylated at Ser15. PhosphorylationH:S16 M:S16 R:S16
Purification:	The antibody was purified from rabbit antiserum by affinity-chromatography using phospho peptide. The antibody against non-phospho peptide was removed by chromatography using corresponding non-phospho peptide.
Purity:	> 95 %

Target Details

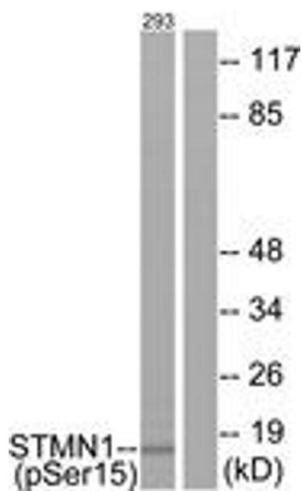
Target:	Stathmin 1 (STMN1)
Alternative Name:	Stathmin 1 (STMN1 Products)
Background:	Synonyms: LAG, LAP18, Leukemia-associated gene protein, Leukemia-associated phosphoprotein p18, Metablastin, Oncoprotein 18, Op18, Phosphoprotein p19, pp17, pp19, PR22, Pr22 protein, Prosolin, stathmin, STN1 NCBI Gene Symbol: STMN1
Molecular Weight:	17 kDa
Gene ID:	3925
OMIM:	151442
UniProt:	P16949
Pathways:	MAPK Signaling , Microtubule Dynamics

Application Details

Application Notes:	WB: 1:500~1:1000 IHC: 1:50~1:100 IF: 1:100~1:500 ELISA: 1:10000
Comment:	Unigene-Number: Hs.209983 (NCBI Gene Symbol: STMN1)
Restrictions:	For Research Use only

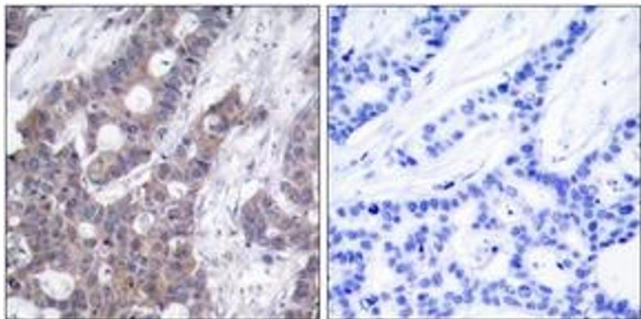
Handling

Format:	Liquid
Concentration:	1 mg/mL
Buffer:	phosphate buffered saline (without Mg2+ and Ca2+), pH 7.4, 150 mM NaCl, 0.02 % sodium azide and 50 % glycerol.
Preservative:	Sodium azide
Precaution of Use:	This product contains sodium azide: a POISONOUS AND HAZARDOUS SUBSTANCE which should be handled by trained staff only.
Storage:	-20 °C
Storage Comment:	Stable at -20°C for at least 1 year.
Expiry Date:	12 months



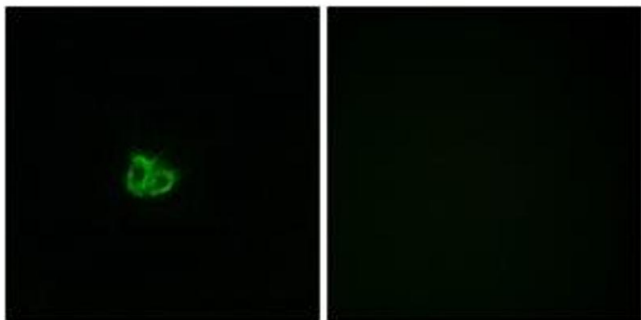
Western Blotting

Image 1. Western blot analysis of extracts from 293 cells, using Stathmin 1 (Phospho-Ser15) Antibody. The lane on the right is treated with the synthesized peptide.



Immunohistochemistry

Image 2. Immunohistochemistry analysis of paraffin-embedded human breast carcinoma, using Stathmin 1 (Phospho-Ser15) Antibody. The picture on the right is treated with the synthesized peptide.



Immunofluorescence

Image 3. Immunofluorescence analysis of COS7 cells, using Stathmin 1 (Phospho-Ser15) Antibody. The picture on the right is treated with the synthesized peptide.