



[Go to Product page](#)

Datasheet for ABIN1532019
anti-Merlin antibody (pSer10)

2 Images

1 Publication

Overview

Quantity:	100 µL
Target:	Merlin (NF2)
Binding Specificity:	AA 1-50, pSer10
Reactivity:	Human, Mouse, Rat
Host:	Rabbit
Clonality:	Polyclonal
Conjugate:	This Merlin antibody is un-conjugated
Application:	Western Blotting (WB), ELISA, Immunohistochemistry (IHC)

Product Details

Immunogen:	The antiserum was produced against synthesized peptide derived from human Merlin around the phosphorylation site of Ser10.
Isotype:	IgG
Specificity:	Merlin (Phospho-Ser10) Antibody detects endogenous levels of Merlin only when phosphorylated at Ser10. PhosphorylationH:S10 M:S10 R:S6
Purification:	The antibody was purified from rabbit antiserum by affinity-chromatography using phospho peptide. The antibody against non-phospho peptide was removed by chromatography using corresponding non-phospho peptide.
Purity:	> 95 %

Target Details

Target:	Merlin (NF2)
Alternative Name:	Merlin (NF2 Products)
Background:	Synonyms: MERL, moesin-ezrin-radizin-like protein, neurofibromatosis type 2 gene, neurofibromatosis-2, Neurofibromin 2, NF-2, NF2, SCH, Schwannomerlin, schwannomerlin, Schwannomin NCBI Gene Symbol: NF2
Molecular Weight:	69 kDa
Gene ID:	4771
OMIM:	101000
UniProt:	P35240
Pathways:	Cell-Cell Junction Organization

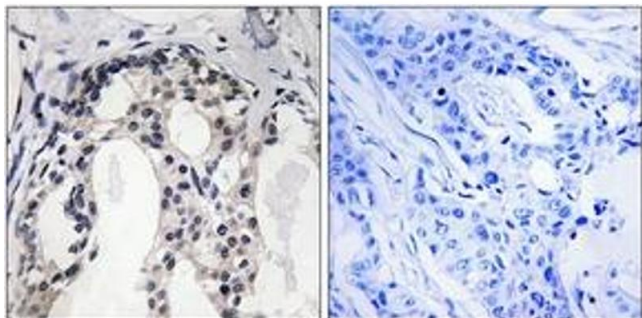
Application Details

Application Notes:	WB: 1:500~1:1000 IHC: 1:50~1:100 ELISA: 1:1000
Comment:	Unigene-Number: Hs.187898 (NCBI Gene Symbol: NF2)
Restrictions:	For Research Use only

Handling

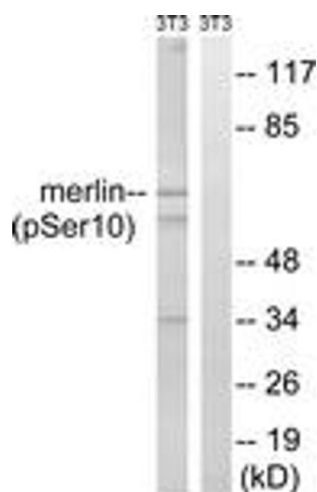
Format:	Liquid
Concentration:	1 mg/mL
Buffer:	phosphate buffered saline (without Mg ²⁺ and Ca ²⁺), pH 7.4, 150 mM NaCl, 0.02 % sodium azide and 50 % glycerol.
Preservative:	Sodium azide
Precaution of Use:	This product contains sodium azide: a POISONOUS AND HAZARDOUS SUBSTANCE which should be handled by trained staff only.
Storage:	-20 °C
Storage Comment:	Stable at -20°C for at least 1 year.
Expiry Date:	12 months

Product cited in: Yu, Zeidel, Hill: "Cellular expression profile for interstitial cells of cajal in bladder - a cell often misidentified as myocyte or myofibroblast." in: **PLoS ONE**, Vol. 7, Issue 11, pp. e48897, (2012) ([PubMed](#)).



Immunohistochemistry

Image 1. Immunohistochemistry analysis of paraffin-embedded human breast carcinoma, using Merlin (Phospho-Ser10) Antibody. The picture on the right is treated with the synthesized peptide.



Western Blotting

Image 2. Western blot analysis of extracts from NIH-3T3 cells treated with IFN 2500U/ml 30', using Merlin (Phospho-Ser10) Antibody. The lane on the right is treated with the synthesized peptide.