

Datasheet for ABIN1532027  
**anti-SRF antibody (pSer77)**



[Go to Product page](#)

2 Images

## Overview

Quantity:	100 µL
Target:	SRF
Binding Specificity:	AA 41-90, pSer77
Reactivity:	Human, Mouse
Host:	Rabbit
Clonality:	Polyclonal
Conjugate:	This SRF antibody is un-conjugated
Application:	Western Blotting (WB), ELISA, Immunohistochemistry (IHC)

## Product Details

Immunogen:	The antiserum was produced against synthesized peptide derived from human SRF around the phosphorylation site of Ser77.
Isotype:	IgG
Specificity:	SRF (Phospho-Ser77) Antibody detects endogenous levels of SRF only when phosphorylated at Ser77. PhosphorylationH:S77 M:S73
Purification:	The antibody was purified from rabbit antiserum by affinity-chromatography using phospho peptide. The antibody against non-phospho peptide was removed by chromatography using corresponding non-phospho peptide.
Purity:	> 95 %

## Target Details

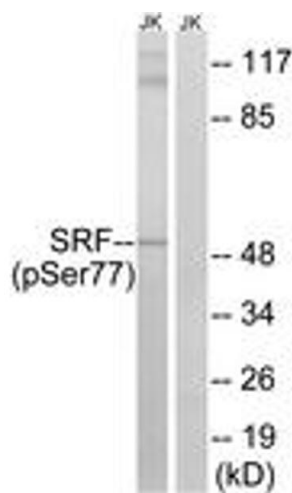
Target:	SRF
Alternative Name:	SRF ( <a href="#">SRF Products</a> )
Background:	Synonyms: serum response factor NCBI Gene Symbol: SRF
Molecular Weight:	51 kDa
Gene ID:	6722
OMIM:	600589
UniProt:	<a href="#">P11831</a>

## Application Details

Application Notes:	WB: 1:500~1:1000 IHC: 1:50~1:100 ELISA: 1:40000
Comment:	Unigene-Number: Hs.520140 (NCBI Gene Symbol: SRF)
Restrictions:	For Research Use only

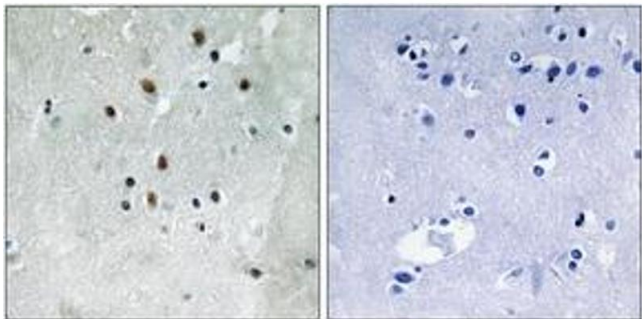
## Handling

Format:	Liquid
Concentration:	1 mg/mL
Buffer:	phosphate buffered saline (without Mg <sup>2+</sup> and Ca <sup>2+</sup> ), pH 7.4, 150 mM NaCl, 0.02 % sodium azide and 50 % glycerol.
Preservative:	Sodium azide
Precaution of Use:	This product contains sodium azide: a POISONOUS AND HAZARDOUS SUBSTANCE which should be handled by trained staff only.
Storage:	-20 °C
Storage Comment:	Stable at -20°C for at least 1 year.
Expiry Date:	12 months



### Western Blotting

**Image 1.** Western blot analysis of extracts from Jurkat cells treated with PMA 125ng/ml 30', using SRF (Phospho-Ser77) Antibody. The lane on the right is treated with the synthesized peptide.



### Immunohistochemistry

**Image 2.** Immunohistochemistry analysis of paraffin-embedded human brain, using SRF (Phospho-Ser77) Antibody. The picture on the right is treated with the synthesized peptide.