

Datasheet for ABIN1532036
anti-AXL antibody (pTyr691)



[Go to Product page](#)

2 Images

Overview

Quantity:	100 µL
Target:	AXL
Binding Specificity:	AA 657-706, pTyr691
Reactivity:	Human, Mouse, Rat
Host:	Rabbit
Clonality:	Polyclonal
Conjugate:	This AXL antibody is un-conjugated
Application:	Western Blotting (WB), ELISA, Immunohistochemistry (IHC)

Product Details

Immunogen:	The antiserum was produced against synthesized peptide derived from human AXL around the phosphorylation site of Tyr691.
Isotype:	IgG
Specificity:	AXL (Phospho-Tyr691) Antibody detects endogenous levels of AXL only when phosphorylated at Tyr691. PhosphorylationH:Y691 M:Y692 R:Y692
Purification:	The antibody was purified from rabbit antiserum by affinity-chromatography using phospho peptide. The antibody against non-phospho peptide was removed by chromatography using corresponding non-phospho peptide.
Purity:	> 95 %

Target Details

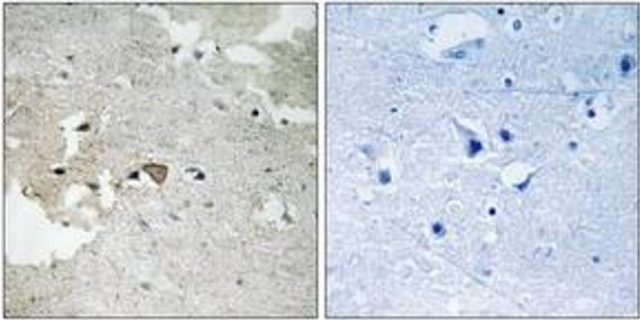
Target:	AXL
Alternative Name:	AXL (AXL Products)
Background:	Synonyms: Adhesion-related kinase, ARK, AXL oncogene, kinase AXL, Tyrosine-protein kinase receptor UFO precursor, UFO NCBI Gene Symbol: AXL
Molecular Weight:	97 kDa
Gene ID:	558
OMIM:	109135
UniProt:	P30530
Pathways:	RTK Signaling , Cellular Response to Molecule of Bacterial Origin

Application Details

Application Notes:	WB: 1:500~1:1000 IHC: 1:50~1:100 ELISA: 1:20000
Comment:	Unigene-Number: Hs.590970 (NCBI Gene Symbol: AXL)
Restrictions:	For Research Use only

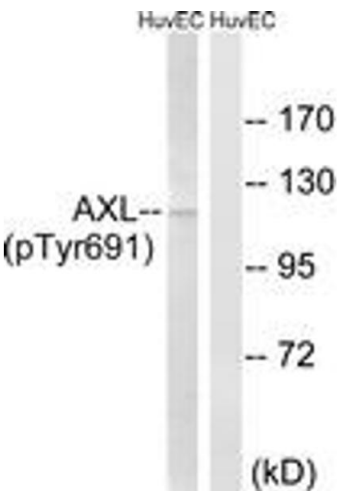
Handling

Format:	Liquid
Concentration:	1 mg/mL
Buffer:	phosphate buffered saline (without Mg ²⁺ and Ca ²⁺), pH 7.4, 150 mM NaCl, 0.02 % sodium azide and 50 % glycerol.
Preservative:	Sodium azide
Precaution of Use:	This product contains sodium azide: a POISONOUS AND HAZARDOUS SUBSTANCE which should be handled by trained staff only.
Storage:	-20 °C
Storage Comment:	Stable at -20°C for at least 1 year.
Expiry Date:	12 months



Immunohistochemistry

Image 1. Immunohistochemistry analysis of paraffin-embedded human brain, using AXL (Phospho-Tyr691) Antibody. The picture on the right is treated with the synthesized peptide.



Western Blotting

Image 2. Western blot analysis of extracts from HuvEc cells treated with EGF 200ng/ml 15', using AXL (Phospho-Tyr691) Antibody. The lane on the right is treated with the synthesized peptide.