



[Go to Product page](#)

Datasheet for ABIN1532054  
**anti-MAP3K1 antibody (pThr1402)**

2 Images

Overview

Quantity:	100 µg
Target:	MAP3K1
Binding Specificity:	AA 1368-1417, pThr1402
Reactivity:	Human, Mouse, Rat
Host:	Rabbit
Clonality:	Polyclonal
Conjugate:	This MAP3K1 antibody is un-conjugated
Application:	Western Blotting (WB), ELISA, Immunohistochemistry (IHC)

Product Details

Immunogen:	The antiserum was produced against synthesized peptide derived from human MAP3K1 around the phosphorylation site of Thr1402.
Isotype:	IgG
Specificity:	MAP3K1 (Phospho-Thr1402) Antibody detects endogenous levels of MAP3K1 only when phosphorylated at Thr1402. PhosphorylationH:T1402 M:T1381 R:T1381
Purification:	The antibody was purified from rabbit antiserum by affinity-chromatography using phospho peptide. The antibody against non-phospho peptide was removed by chromatography using corresponding non-phospho peptide.
Purity:	> 95 %

## Target Details

---

Target:	MAP3K1
Alternative Name:	MAP3K1 ( <a href="#">MAP3K1 Products</a> )
Background:	Synonyms: MAPK/ERK kinase kinase 1, MEK kinase 1, MEKK 1 NCBI Gene Symbol: MAP3K1
Molecular Weight:	161 kDa
Gene ID:	4214
OMIM:	600982
UniProt:	<a href="#">Q13233</a>
Pathways:	<a href="#">MAPK Signaling</a> , <a href="#">Interferon-gamma Pathway</a> , <a href="#">Caspase Cascade in Apoptosis</a> , <a href="#">TLR Signaling</a> , <a href="#">Fc-epsilon Receptor Signaling Pathway</a> , <a href="#">Activation of Innate immune Response</a> , <a href="#">Regulation of Actin Filament Polymerization</a> , <a href="#">Toll-Like Receptors Cascades</a>

## Application Details

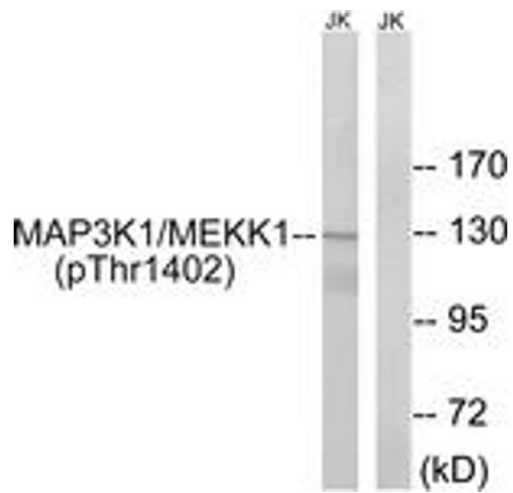
---

Application Notes:	WB: 1:500~1:1000 IHC: 1:50~1:100 ELISA: 1:40000
Comment:	Unigene-Number: Hs.657756 (NCBI Gene Symbol: MAP3K1)
Restrictions:	For Research Use only

## Handling

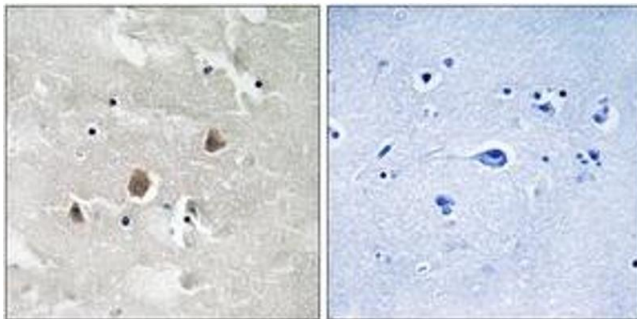
---

Format:	Liquid
Concentration:	1 mg/mL
Buffer:	phosphate buffered saline (without Mg <sup>2+</sup> and Ca <sup>2+</sup> ), pH 7.4, 150 mM NaCl, 0.02 % sodium azide and 50 % glycerol.
Preservative:	Sodium azide
Precaution of Use:	This product contains sodium azide: a POISONOUS AND HAZARDOUS SUBSTANCE which should be handled by trained staff only.
Storage:	-20 °C
Storage Comment:	Stable at -20°C for at least 1 year.
Expiry Date:	12 months



### Western Blotting

**Image 1.** Western blot analysis of extracts from Jurkat cells, using MAP3K1 (Phospho-Thr1402) Antibody. The lane on the right is treated with the synthesized peptide.



### Immunohistochemistry

**Image 2.** Immunohistochemistry analysis of paraffin-embedded human brain, using MAP3K1 (Phospho-Thr1402) Antibody. The picture on the right is treated with the synthesized peptide.