

Datasheet for ABIN1532060

anti-MAP2K7 antibody (pSer271)[Go to Product page](#)**2** Images

Overview

Quantity:	100 µL
Target:	MAP2K7
Binding Specificity:	AA 236-285, pSer271
Reactivity:	Human, Mouse, Rat
Host:	Rabbit
Clonality:	Polyclonal
Conjugate:	This MAP2K7 antibody is un-conjugated
Application:	Western Blotting (WB), ELISA, Immunohistochemistry (IHC)

Product Details

Immunogen:	The antiserum was produced against synthesized peptide derived from human MAP2K7 around the phosphorylation site of Ser271.
Isotype:	IgG
Specificity:	MAP2K7 (Phospho-Ser271) Antibody detects endogenous levels of MAP2K7 only when phosphorylated at Ser271. PhosphorylationH:S271 M:S287 R:S271
Purification:	The antibody was purified from rabbit antiserum by affinity-chromatography using phospho peptide. The antibody against non-phospho peptide was removed by chromatography using corresponding non-phospho peptide.
Purity:	> 95 %

Target Details

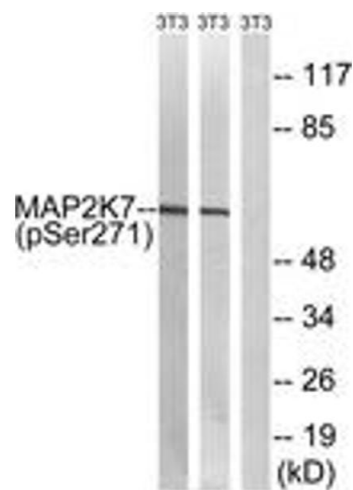
Target:	MAP2K7
Alternative Name:	MAP2K7 (MAP2K7 Products)
Background:	Synonyms: c-Jun N-terminal kinase kinase 2, Dual specificity mitogen-activated protein kinase kinase 7, JNK activating kinase 2, JNK kinase 2, JNKK 2, JNKK2, kinase MKK7, MAP kinase kinase 7, MAP2K7, MAPK/ERK kinase 7, MAPKK 7, MP2K7, PRKMK7 NCBI Gene Symbol: MAP2K7
Molecular Weight:	47 kDa
Gene ID:	5609
OMIM:	603014
UniProt:	O14733
Pathways:	MAPK Signaling , TLR Signaling , Fc-epsilon Receptor Signaling Pathway , Activation of Innate immune Response , Toll-Like Receptors Cascades , BCR Signaling

Application Details

Application Notes:	WB: 1:500~1:1000 IHC: 1:50~1:100 ELISA: 1:20000
Comment:	Unigene-Number: Hs.531754 (NCBI Gene Symbol: MAP2K7)
Restrictions:	For Research Use only

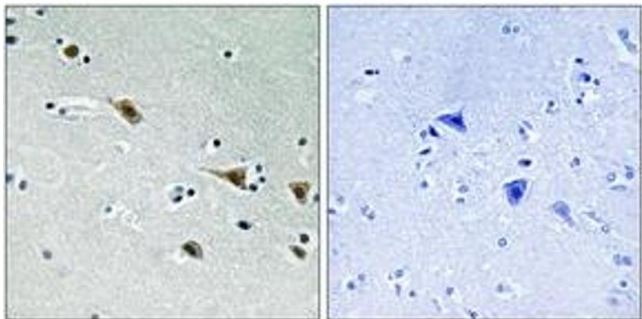
Handling

Format:	Liquid
Concentration:	1 mg/mL
Buffer:	phosphate buffered saline (without Mg ²⁺ and Ca ²⁺), pH 7.4, 150 mM NaCl, 0.02 % sodium azide and 50 % glycerol.
Preservative:	Sodium azide
Precaution of Use:	This product contains sodium azide: a POISONOUS AND HAZARDOUS SUBSTANCE which should be handled by trained staff only.
Storage:	-20 °C
Storage Comment:	Stable at -20°C for at least 1 year.
Expiry Date:	12 months



Western Blotting

Image 1. Western blot analysis of extracts from NIH-3T3 cells treated with insulin 0.01U/ml 15' and NIH-3T3 cells treated with EGF 200ng/ml 30', using MAP2K7 (Phospho-Ser271) Antibody. The lane on the right is treated with the synthesized peptide.



Immunohistochemistry

Image 2. Immunohistochemistry analysis of paraffin-embedded human brain, using MAP2K7 (Phospho-Ser271) Antibody. The picture on the right is treated with the synthesized peptide.