

Datasheet for ABIN1532065
anti-MSK2 antibody (pThr568)

2 Images

[Go to Product page](#)

Overview

Quantity:	100 µg
Target:	MSK2 (RPS6KA4)
Binding Specificity:	AA 531-580, pThr568
Reactivity:	Human, Mouse
Host:	Rabbit
Clonality:	Polyclonal
Conjugate:	This MSK2 antibody is un-conjugated
Application:	Western Blotting (WB), ELISA, Immunohistochemistry (IHC)

Product Details

Immunogen:	The antiserum was produced against synthesized peptide derived from human MSK2 around the phosphorylation site of Thr568.
Isotype:	IgG
Specificity:	MSK2 (Phospho-Thr568) Antibody detects endogenous levels of MSK2 only when phosphorylated at Thr568. PhosphorylationH:T568 M:T568
Purification:	The antibody was purified from rabbit antiserum by affinity-chromatography using phospho peptide. The antibody against non-phospho peptide was removed by chromatography using corresponding non-phospho peptide.
Purity:	> 95 %

Target Details

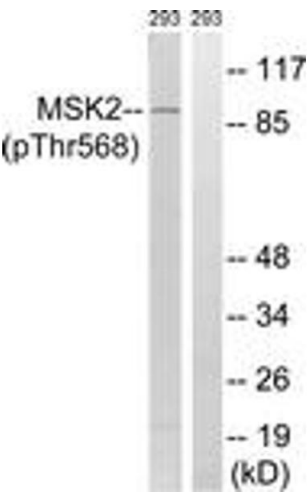
Target:	MSK2 (RPS6KA4)
Alternative Name:	MSK2 (RPS6KA4 Products)
Background:	Synonyms: Nuclear mitogen- and stress-activated protein kinase 2, 90 kDa ribosomal protein S6 kinase 4, Ribosomal protein kinase B, RSKB NCBI Gene Symbol: RPS6KA4
Molecular Weight:	85 kDa
Gene ID:	8986
OMIM:	603606
UniProt:	075676

Application Details

Application Notes:	WB: 1:500~1:1000 IHC: 1:50~1:100 ELISA: 1:40000
Comment:	Unigene-Number: Hs.105584 (NCBI Gene Symbol: RPS6KA4)
Restrictions:	For Research Use only

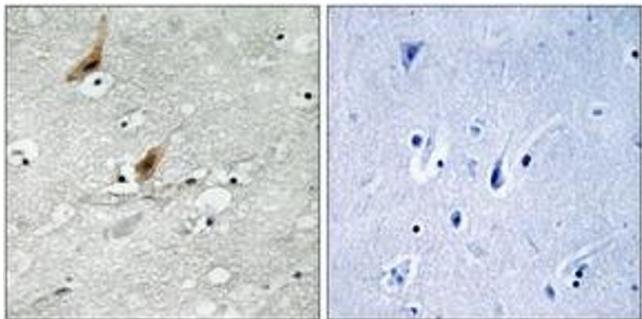
Handling

Format:	Liquid
Concentration:	1 mg/mL
Buffer:	phosphate buffered saline (without Mg2+ and Ca2+), pH 7.4, 150 mM NaCl, 0.02 % sodium azide and 50 % glycerol.
Preservative:	Sodium azide
Precaution of Use:	This product contains sodium azide: a POISONOUS AND HAZARDOUS SUBSTANCE which should be handled by trained staff only.
Storage:	-20 °C
Storage Comment:	Stable at -20°C for at least 1 year.
Expiry Date:	12 months



Western Blotting

Image 1. Western blot analysis of extracts from 293 cells treated with H₂O₂ 100uM 15', using MSK2 (Phospho-Thr568) Antibody. The lane on the right is treated with the synthesized peptide.



Immunohistochemistry

Image 2. Immunohistochemistry analysis of paraffin-embedded human brain, using MSK2 (Phospho-Thr568) Antibody. The picture on the right is treated with the synthesized peptide.