

Datasheet for ABIN1532067
anti-OSR1 antibody (pThr185)

2 Images

[Go to Product page](#)

Overview

Quantity:	100 µg
Target:	OSR1
Binding Specificity:	AA 151-200, pThr185
Reactivity:	Human, Mouse
Host:	Rabbit
Clonality:	Polyclonal
Conjugate:	This OSR1 antibody is un-conjugated
Application:	ELISA, Immunohistochemistry (IHC), Western Blotting (WB)

Product Details

Immunogen:	The antiserum was produced against synthesized peptide derived from human OSR1 around the phosphorylation site of Thr185.
Isotype:	IgG
Specificity:	OSR1 (Phospho-Thr185) Antibody detects endogenous levels of OSR1 only when phosphorylated at Thr185. PhosphorylationH:T185 M:T185
Purification:	The antibody was purified from rabbit antiserum by affinity-chromatography using phospho peptide. The antibody against non-phospho peptide was removed by chromatography using corresponding non-phospho peptide.
Purity:	> 95 %

Target Details

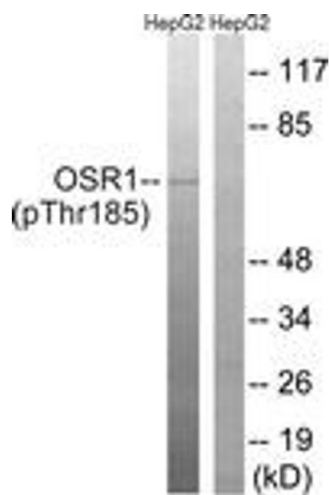
Target:	OSR1
Alternative Name:	OSR1 (OSR1 Products)
Background:	Synonyms: Oxidative stress-responsive 1 protein NCBI Gene Symbol: OXSR1
Molecular Weight:	58 kDa
Gene ID:	9943
OMIM:	604046
UniProt:	O95747
Pathways:	Tube Formation

Application Details

Application Notes:	WB: 1:500~1:1000 IHC: 1:50~1:100 ELISA: 1:10000
Comment:	Unigene-Number: Hs.475970 (NCBI Gene Symbol: OXSR1)
Restrictions:	For Research Use only

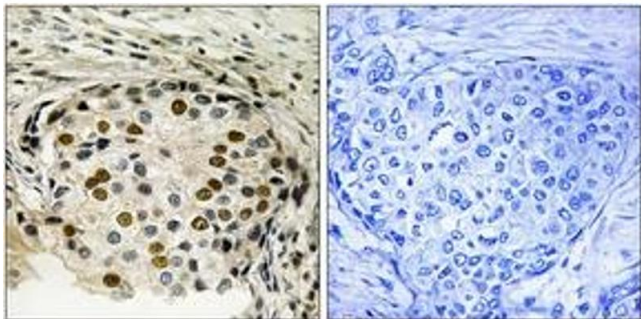
Handling

Format:	Liquid
Concentration:	1 mg/mL
Buffer:	phosphate buffered saline (without Mg ²⁺ and Ca ²⁺), pH 7.4, 150 mM NaCl, 0.02 % sodium azide and 50 % glycerol.
Preservative:	Sodium azide
Precaution of Use:	This product contains sodium azide: a POISONOUS AND HAZARDOUS SUBSTANCE which should be handled by trained staff only.
Storage:	-20 °C
Storage Comment:	Stable at -20°C for at least 1 year.
Expiry Date:	12 months



Western Blotting

Image 1. Western blot analysis of extracts from HepG2 cells treated with serum 20% 15', using OSR1 (Phospho-Thr185) Antibody. The lane on the right is treated with the synthesized peptide.



Immunohistochemistry

Image 2. Immunohistochemistry analysis of paraffin-embedded human breast carcinoma, using OSR1 (Phospho-Thr185) Antibody. The picture on the right is treated with the synthesized peptide.