

Datasheet for ABIN1532110
anti-ITCH antibody (pTyr420)



[Go to Product page](#)

1 Image

Overview

Quantity:	100 µL
Target:	ITCH
Binding Specificity:	AA 386-435, pTyr420
Reactivity:	Human, Mouse
Host:	Rabbit
Clonality:	Polyclonal
Conjugate:	This ITCH antibody is un-conjugated
Application:	ELISA, Immunohistochemistry (IHC)

Product Details

Immunogen:	The antiserum was produced against synthesized peptide derived from human ITCH around the phosphorylation site of Tyr420.
Isotype:	IgG
Specificity:	ITCH (Phospho-Tyr420) Antibody detects endogenous levels of ITCH only when phosphorylated at Tyr420. PhosphorylationH:Y420 M:Y381
Purification:	The antibody was purified from rabbit antiserum by affinity-chromatography using phospho peptide. The antibody against non-phospho peptide was removed by chromatography using corresponding non-phospho peptide.
Purity:	> 95 %

Target Details

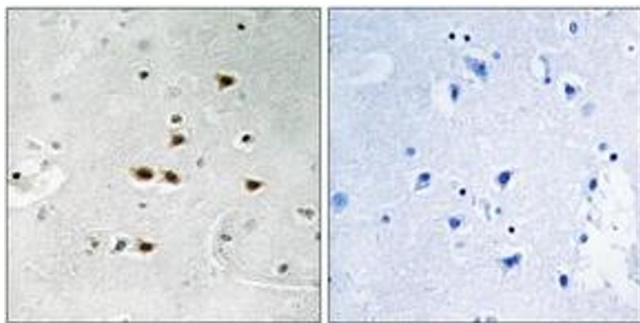
Target:	ITCH
Alternative Name:	ITCH (ITCH Products)
Background:	Synonyms: AIF4, AIP4, atrophin-1-interacting protein 4, Itchy homolog E3 ubiquitin protein ligase, NAPP1, NFE2-associated polypeptide 1, ubiquitin protein ligase ITCH NCBI Gene Symbol: ITCH
Molecular Weight:	102 kDa
Gene ID:	83737
OMIM:	606409
UniProt:	Q96J02
Pathways:	Activation of Innate immune Response , CXCR4-mediated Signaling Events

Application Details

Application Notes:	IHC: 1:50~1:100 ELISA: 1:20000
Comment:	Unigene-Number: Hs.632272 (NCBI Gene Symbol: ITCH)
Restrictions:	For Research Use only

Handling

Format:	Liquid
Concentration:	1 mg/mL
Buffer:	phosphate buffered saline (without Mg ²⁺ and Ca ²⁺), pH 7.4, 150 mM NaCl, 0.02 % sodium azide and 50 % glycerol.
Preservative:	Sodium azide
Precaution of Use:	This product contains sodium azide: a POISONOUS AND HAZARDOUS SUBSTANCE which should be handled by trained staff only.
Storage:	-20 °C
Storage Comment:	Stable at -20°C for at least 1 year.
Expiry Date:	12 months



Immunohistochemistry

Image 1. Immunohistochemistry analysis of paraffin-embedded human brain, using ITCH (Phospho-Tyr420) Antibody. The picture on the right is treated with the synthesized peptide.