



[Go to Product page](#)

Datasheet for ABIN1532116  
**anti-WWOX antibody (pTyr33)**

2 Images

Overview

Quantity:	100 µg
Target:	WWOX
Binding Specificity:	AA 18-67, pTyr33
Reactivity:	Human, Mouse
Host:	Rabbit
Clonality:	Polyclonal
Conjugate:	This WWOX antibody is un-conjugated
Application:	Western Blotting (WB), ELISA, Immunohistochemistry (IHC)

Product Details

Immunogen:	The antiserum was produced against synthesized peptide derived from human WWOX around the phosphorylation site of Tyr33.
Isotype:	IgG
Specificity:	WWOX (Phospho-Tyr33) Antibody detects endogenous levels of WWOX only when phosphorylated at Tyr33. PhosphorylationH:Y33 M:Y33
Purification:	The antibody was purified from rabbit antiserum by affinity-chromatography using phospho peptide. The antibody against non-phospho peptide was removed by chromatography using corresponding non-phospho peptide.
Purity:	> 95 %

## Target Details

---

Target:	WVOX
Alternative Name:	WVOX ( <a href="#">WVOX Products</a> )
Background:	Synonyms: Aberrant WW domain-containing oxidoreductase, FOR, WOX1, WW domain-containing oxidoreductase NCBI Gene Symbol: WVOX
Molecular Weight:	46 kDa
Gene ID:	51741
OMIM:	133239
UniProt:	<a href="#">Q96KM3</a>

## Application Details

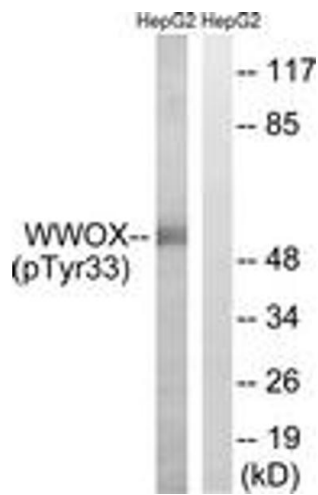
---

Application Notes:	WB: 1:500~1:1000 IHC: 1:50~1:100 ELISA: 1:10000
Comment:	Unigene-Number: Hs.461453 (NCBI Gene Symbol: WVOX)
Restrictions:	For Research Use only

## Handling

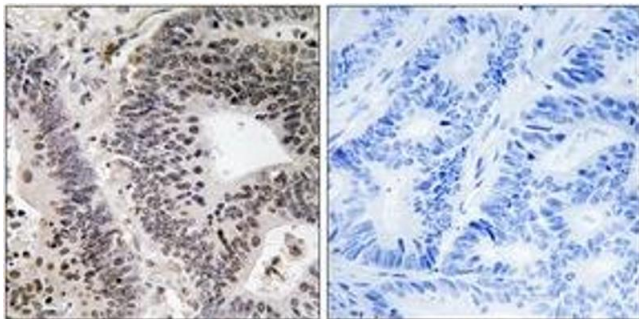
---

Format:	Liquid
Concentration:	1 mg/mL
Buffer:	phosphate buffered saline (without Mg <sup>2+</sup> and Ca <sup>2+</sup> ), pH 7.4, 150 mM NaCl, 0.02 % sodium azide and 50 % glycerol.
Preservative:	Sodium azide
Precaution of Use:	This product contains sodium azide: a POISONOUS AND HAZARDOUS SUBSTANCE which should be handled by trained staff only.
Storage:	-20 °C
Storage Comment:	Stable at -20°C for at least 1 year.
Expiry Date:	12 months



### Western Blotting

**Image 1.** Western blot analysis of extracts from HepG2 cells treated with PMA 125ng/ml 30', using WWOX (Phospho-Tyr33) Antibody. The lane on the right is treated with the synthesized peptide.



### Immunohistochemistry

**Image 2.** Immunohistochemistry analysis of paraffin-embedded human colon carcinoma, using WWOX (Phospho-Tyr33) Antibody. The picture on the right is treated with the synthesized peptide.