

Datasheet for ABIN1532136
anti-DPYSL2 antibody (pThr509)



[Go to Product page](#)

2 Images

Overview

| | |
|----------------------|--|
| Quantity: | 100 µL |
| Target: | DPYSL2 |
| Binding Specificity: | AA 475-524, pThr509 |
| Reactivity: | Human, Mouse, Rat |
| Host: | Rabbit |
| Clonality: | Polyclonal |
| Conjugate: | This DPYSL2 antibody is un-conjugated |
| Application: | Western Blotting (WB), ELISA, Immunohistochemistry (IHC) |

Product Details

| | |
|---------------|---|
| Immunogen: | The antiserum was produced against synthesized peptide derived from human CRMP-2 around the phosphorylation site of Thr509. |
| Isotype: | IgG |
| Specificity: | CRMP-2 (Phospho-Thr509) Antibody detects endogenous levels of CRMP-2 only when phosphorylated at Thr509. PhosphorylationH:T509 M:T509 R:T509 |
| Purification: | The antibody was purified from rabbit antiserum by affinity-chromatography using phospho peptide. The antibody against non-phospho peptide was removed by chromatography using corresponding non-phospho peptide. |
| Purity: | > 95 % |

Target Details

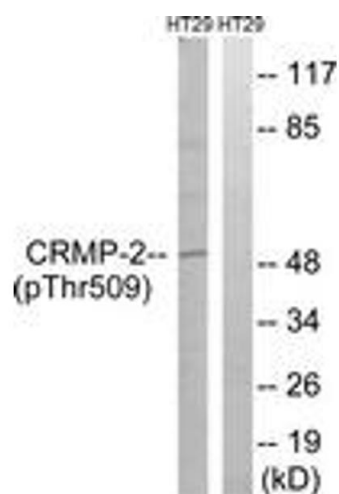
| | |
|-------------------|---|
| Target: | DPYSL2 |
| Alternative Name: | CRMP-2 (DPYSL2 Products) |
| Background: | Synonyms: Collapsin response mediator protein 2, CRMP2, Dihydropyrimidinase related protein-2, DPYL2, DPYSL2, DRP-2, N2A3, TOAD-64, Turned on after division, 64 kDa protein, ULIP 2 protein, ULIP2 NCBI Gene Symbol: DPYSL2 |
| Molecular Weight: | 62 kDa |
| Gene ID: | 1808 |
| OMIM: | 602463 |
| UniProt: | Q16555 |
| Pathways: | Regulation of Cell Size |

Application Details

| | |
|--------------------|--|
| Application Notes: | WB: 1:500~1:1000 IHC: 1:50~1:100 ELISA: 1:1000 |
| Comment: | Unigene-Number: Hs.173381 (NCBI Gene Symbol: DPYSL2) |
| Restrictions: | For Research Use only |

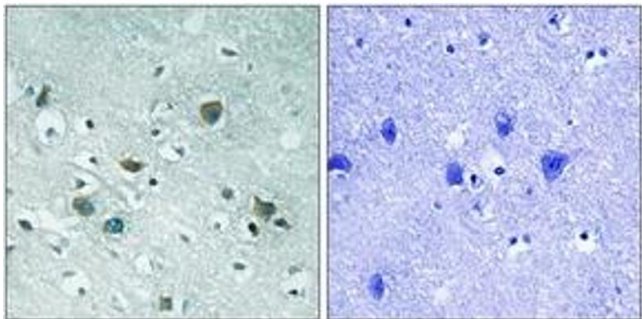
Handling

| | |
|--------------------|---|
| Format: | Liquid |
| Concentration: | 1 mg/mL |
| Buffer: | phosphate buffered saline (without Mg ²⁺ and Ca ²⁺), pH 7.4, 150 mM NaCl, 0.02 % sodium azide and 50 % glycerol. |
| Preservative: | Sodium azide |
| Precaution of Use: | This product contains sodium azide: a POISONOUS AND HAZARDOUS SUBSTANCE which should be handled by trained staff only. |
| Storage: | -20 °C |
| Storage Comment: | Stable at -20°C for at least 1 year. |
| Expiry Date: | 12 months |



Western Blotting

Image 1. Western blot analysis of extracts from HT29 cells treated with heat shock, using CRMP-2 (Phospho-Thr509) Antibody. The lane on the right is treated with the synthesized peptide.



Immunohistochemistry

Image 2. Immunohistochemistry analysis of paraffin-embedded human brain, using CRMP-2 (Phospho-Thr509) Antibody. The picture on the right is treated with the synthesized peptide.