

Datasheet for ABIN1532138
anti-Cyclin C antibody (pSer275)

2 Images

[Go to Product page](#)

Overview

Quantity:	100 µg
Target:	Cyclin C (CCNC)
Binding Specificity:	AA 234-283, pSer275
Reactivity:	Human, Mouse, Rat
Host:	Rabbit
Clonality:	Polyclonal
Conjugate:	This Cyclin C antibody is un-conjugated
Application:	Western Blotting (WB), ELISA, Immunohistochemistry (IHC)

Product Details

Immunogen:	The antiserum was produced against synthesized peptide derived from human Cyclin C around the phosphorylation site of Ser275.
Isotype:	IgG
Specificity:	Cyclin C (Phospho-Ser275) Antibody detects endogenous levels of Cyclin C only when phosphorylated at Ser275. PhosphorylationH:S275 M:S275 R:S270
Purification:	The antibody was purified from rabbit antiserum by affinity-chromatography using phospho peptide. The antibody against non-phospho peptide was removed by chromatography using corresponding non-phospho peptide.
Purity:	> 95 %

Target Details

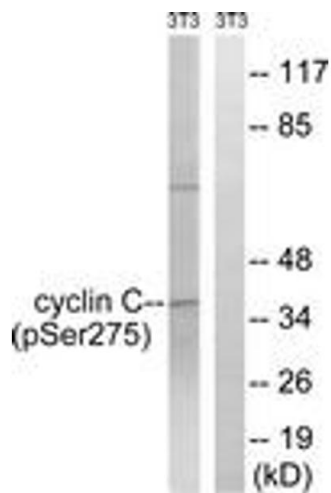
Target:	Cyclin C (CCNC)
Alternative Name:	Cyclin C (CCNC Products)
Background:	Synonyms: CG1C, cyclin C, SRB11 NCBI Gene Symbol: CCNC
Molecular Weight:	33 kDa
Gene ID:	892
OMIM:	123838
UniProt:	P24863
Pathways:	Cell Division Cycle , Regulation of Lipid Metabolism by PPARalpha

Application Details

Application Notes:	WB: 1:500~1:1000 IHC: 1:50~1:100 ELISA: 1:1000
Comment:	Unigene-Number: Hs.430646, Hs.633351 (NCBI Gene Symbol: CCNC)
Restrictions:	For Research Use only

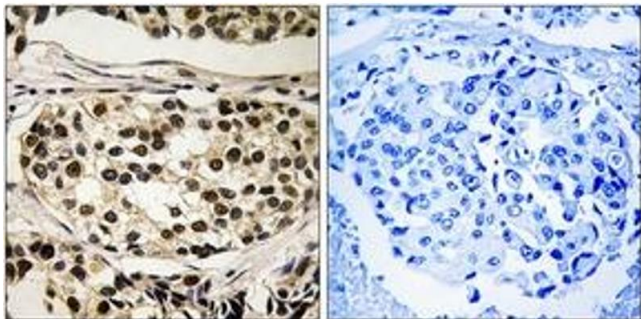
Handling

Format:	Liquid
Concentration:	1 mg/mL
Buffer:	phosphate buffered saline (without Mg ²⁺ and Ca ²⁺), pH 7.4, 150 mM NaCl, 0.02 % sodium azide and 50 % glycerol.
Preservative:	Sodium azide
Precaution of Use:	This product contains sodium azide: a POISONOUS AND HAZARDOUS SUBSTANCE which should be handled by trained staff only.
Storage:	-20 °C
Storage Comment:	Stable at -20°C for at least 1 year.
Expiry Date:	12 months



Western Blotting

Image 1. Western blot analysis of extracts from NIH-3T3 cells treated with UV 15', using Cyclin C (Phospho-Ser275) Antibody. The lane on the right is treated with the synthesized peptide.



Immunohistochemistry

Image 2. Immunohistochemistry analysis of paraffin-embedded human breast carcinoma, using Cyclin C (Phospho-Ser275) Antibody. The picture on the right is treated with the synthesized peptide.