

Datasheet for ABIN1532148

anti-Kv2.1/KCNB1 antibody (pSer805)



[Go to Product page](#)

1 Image

Overview

Quantity:	100 µL
Target:	Kv2.1/KCNB1 (KCNB1)
Binding Specificity:	AA 771-820, pSer805
Reactivity:	Human, Rat, Mouse
Host:	Rabbit
Clonality:	Polyclonal
Conjugate:	This Kv2.1/KCNB1 antibody is un-conjugated
Application:	ELISA, Western Blotting (WB)

Product Details

Immunogen:	The antiserum was produced against synthesized peptide derived from human Kv2.1 around the phosphorylation site of Ser805.
Isotype:	IgG
Specificity:	Kv2.1 (Phospho-Ser805) Antibody detects endogenous levels of Kv2.1 only when phosphorylated at Ser805. PhosphorylationH:S805 M:S804 R:S804
Purification:	The antibody was purified from rabbit antiserum by affinity-chromatography using phospho peptide. The antibody against non-phospho peptide was removed by chromatography using corresponding non-phospho peptide.
Purity:	> 95 %

Target Details

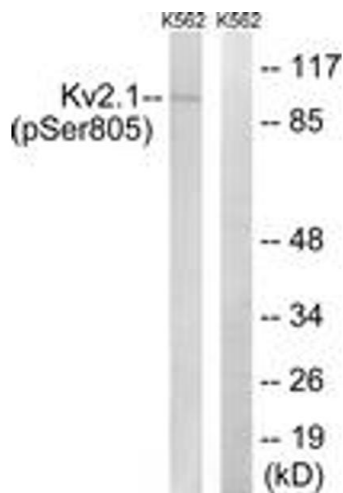
Target:	Kv2.1/KCNB1 (KCNB1)
Alternative Name:	Kv2.1 (KCNB1 Products)
Background:	Synonyms: DRK1, KCB1, KCNB1, Potassium channel Kv2.1, Potassium voltage-gated channel subfamily B member 1 NCBI Gene Symbol: KCNB1
Molecular Weight:	95 kDa
Gene ID:	3745
OMIM:	600397
UniProt:	Q14721
Pathways:	Synaptic Membrane

Application Details

Application Notes:	WB: 1:500~1:1000 ELISA: 1:40000
Comment:	Unigene-Number: Hs.84244 (NCBI Gene Symbol: KCNB1)
Restrictions:	For Research Use only

Handling

Format:	Liquid
Concentration:	1 mg/mL
Buffer:	phosphate buffered saline (without Mg ²⁺ and Ca ²⁺), pH 7.4, 150 mM NaCl, 0.02 % sodium azide and 50 % glycerol.
Preservative:	Sodium azide
Precaution of Use:	This product contains sodium azide: a POISONOUS AND HAZARDOUS SUBSTANCE which should be handled by trained staff only.
Storage:	-20 °C
Storage Comment:	Stable at -20°C for at least 1 year.
Expiry Date:	12 months



Western Blotting

Image 1. Western blot analysis of extracts from K562 cells treated with TNF 200ng/ml 30', using Kv2.1 (Phospho-Ser805) Antibody. The lane on the right is treated with the synthesized peptide.