

Datasheet for ABIN1532150

anti-MAPKAP Kinase 5 antibody (pThr182)



[Go to Product page](#)

2 Images

Overview

Quantity:	100 µL
Target:	MAPKAP Kinase 5 (MAPKAPK5)
Binding Specificity:	AA 148-197, pThr182
Reactivity:	Human, Mouse
Host:	Rabbit
Clonality:	Polyclonal
Conjugate:	This MAPKAP Kinase 5 antibody is un-conjugated
Application:	Western Blotting (WB), ELISA, Immunohistochemistry (IHC)

Product Details

Immunogen:	The antiserum was produced against synthesized peptide derived from human MAPKAPK5 around the phosphorylation site of Thr182.
Isotype:	IgG
Specificity:	MAPKAPK5 (Phospho-Thr182) Antibody detects endogenous levels of MAPKAPK5 only when phosphorylated at Thr182. PhosphorylationH:T182 M:T182
Purification:	The antibody was purified from rabbit antiserum by affinity-chromatography using phospho peptide. The antibody against non-phospho peptide was removed by chromatography using corresponding non-phospho peptide.
Purity:	> 95 %

Target Details

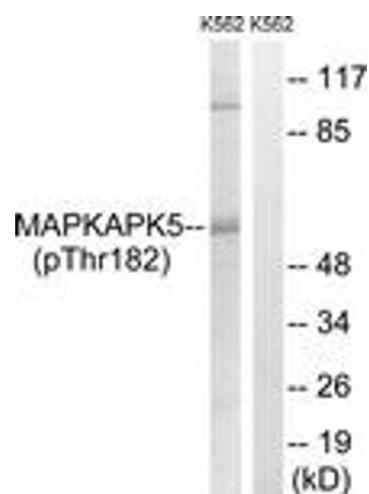
Target:	MAPKAP Kinase 5 (MAPKAPK5)
Alternative Name:	MAPKAPK5 (MAPKAPK5 Products)
Background:	Synonyms: MAP kinase-activated protein kinase 5, MAPK-activated protein kinase 5, MAPK5, MAPKAP kinase 5, p38-regulated/activated protein kinase, PRAK NCBI Gene Symbol: MAPKAPK5
Molecular Weight:	54 kDa
Gene ID:	8550
OMIM:	606723
UniProt:	Q8IW41
Pathways:	MAPK Signaling

Application Details

Application Notes:	WB: 1:500~1:1000 IHC: 1:50~1:100 ELISA: 1:1000
Comment:	Unigene-Number: Hs.413901 (NCBI Gene Symbol: MAPKAPK5)
Restrictions:	For Research Use only

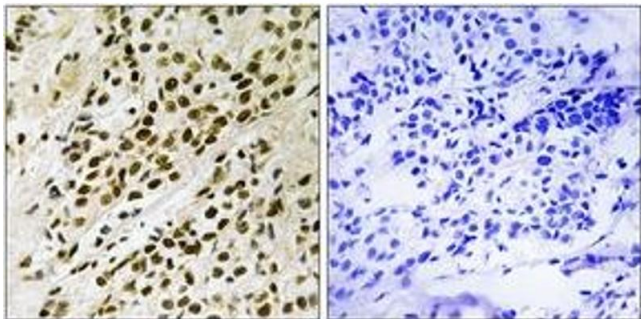
Handling

Format:	Liquid
Concentration:	1 mg/mL
Buffer:	phosphate buffered saline (without Mg2+ and Ca2+), pH 7.4, 150 mM NaCl, 0.02 % sodium azide and 50 % glycerol.
Preservative:	Sodium azide
Precaution of Use:	This product contains sodium azide: a POISONOUS AND HAZARDOUS SUBSTANCE which should be handled by trained staff only.
Storage:	-20 °C
Storage Comment:	Stable at -20°C for at least 1 year.
Expiry Date:	12 months



Western Blotting

Image 1. Western blot analysis of extracts from K562 cells treated with Na3VO4 0.3nM 40', using MAPKAPK5 (Phospho-Thr182) Antibody. The lane on the right is treated with the synthesized peptide.



Immunohistochemistry

Image 2. Immunohistochemistry analysis of paraffin-embedded human breast carcinoma, using MAPKAPK5 (Phospho-Thr182) Antibody. The picture on the right is treated with the synthesized peptide.