



Datasheet for ABIN1532152

anti-MDM4-binding Protein antibody (pSer367)



[Go to Product page](#)

2 Images

Overview

Quantity:	100 µL
Target:	MDM4-binding Protein (MDM4)
Binding Specificity:	AA 336-385, pSer367
Reactivity:	Human, Mouse, Rat
Host:	Rabbit
Clonality:	Polyclonal
Conjugate:	This MDM4-binding Protein antibody is un-conjugated
Application:	Western Blotting (WB), ELISA, Immunohistochemistry (IHC)

Product Details

Immunogen:	The antiserum was produced against synthesized peptide derived from human MDM4 around the phosphorylation site of Ser367.
Isotype:	IgG
Specificity:	MDM4 (Phospho-Ser367) Antibody detects endogenous levels of MDM4 only when phosphorylated at Ser367. PhosphorylationH:S367 M:S367 R:S368
Purification:	The antibody was purified from rabbit antiserum by affinity-chromatography using phospho peptide. The antibody against non-phospho peptide was removed by chromatography using corresponding non-phospho peptide.
Purity:	> 95 %

Target Details

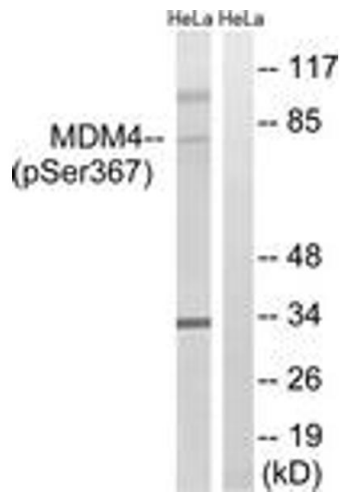
Target:	MDM4-binding Protein (MDM4)
Alternative Name:	MDM4 (MDM4 Products)
Background:	Synonyms: double minute 4 protein, Mdm2-like p53-binding protein, MDMX, p53-binding protein Mdm4 NCBI Gene Symbol: MDM4
Molecular Weight:	54 kDa
Gene ID:	4194
OMIM:	602704
UniProt:	015151
Pathways:	Cell Division Cycle

Application Details

Application Notes:	WB: 1:500~1:1000 IHC: 1:50~1:100 ELISA: 1:1000
Comment:	Unigene-Number: Hs.658187 (NCBI Gene Symbol: MDM4)
Restrictions:	For Research Use only

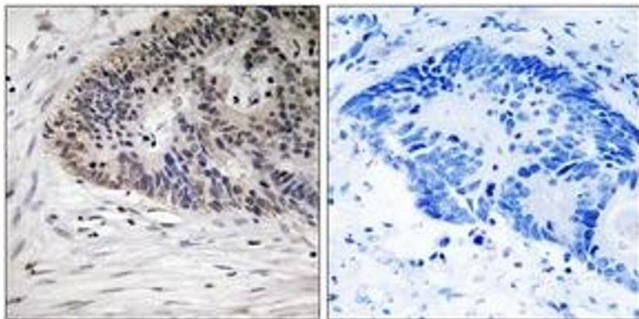
Handling

Format:	Liquid
Concentration:	1 mg/mL
Buffer:	phosphate buffered saline (without Mg ²⁺ and Ca ²⁺), pH 7.4, 150 mM NaCl, 0.02 % sodium azide and 50 % glycerol.
Preservative:	Sodium azide
Precaution of Use:	This product contains sodium azide: a POISONOUS AND HAZARDOUS SUBSTANCE which should be handled by trained staff only.
Storage:	-20 °C
Storage Comment:	Stable at -20°C for at least 1 year.
Expiry Date:	12 months



Western Blotting

Image 1. Western blot analysis of extracts from HeLa cells treated with calyculinA 50ng/ml 30', using MDM4 (Phospho-Ser367) Antibody. The lane on the right is treated with the synthesized peptide.



Immunohistochemistry

Image 2. Immunohistochemistry analysis of paraffin-embedded human colon carcinoma, using MDM4 (Phospho-Ser367) Antibody. The picture on the right is treated with the synthesized peptide.