



[Go to Product page](#)

Datasheet for ABIN1532162
anti-NUDC antibody (pSer326)

2 Images

Overview

Quantity:	100 µg
Target:	NUDC
Binding Specificity:	AA 282-331, pSer326
Reactivity:	Human, Rat, Mouse
Host:	Rabbit
Clonality:	Polyclonal
Conjugate:	This NUDC antibody is un-conjugated
Application:	Western Blotting (WB), ELISA, Immunohistochemistry (IHC)

Product Details

Immunogen:	The antiserum was produced against synthesized peptide derived from human NudC around the phosphorylation site of Ser326.
Isotype:	IgG
Specificity:	NudC (Phospho-Ser326) Antibody detects endogenous levels of NudC only when phosphorylated at Ser326. PhosphorylationH:S326 M:S327 R:S327
Purification:	The antibody was purified from rabbit antiserum by affinity-chromatography using phospho peptide. The antibody against non-phospho peptide was removed by chromatography using corresponding non-phospho peptide.
Purity:	> 95 %

Target Details

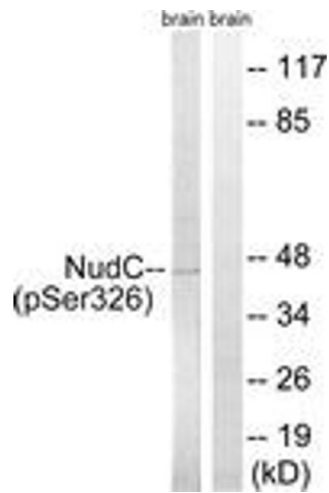
Target:	NUDC
Abstract:	NUDC Products
Background:	Synonyms: MNUDC protein, Nuclear distribution gene C (A.nidulans) homolog, SIG-92 NCBI Gene Symbol: NUDC
Molecular Weight:	38 kDa
Gene ID:	10726
OMIM:	610325
UniProt:	Q9Y266

Application Details

Application Notes:	WB: 1:500~1:1000 IHC: 1:50~1:100 ELISA: 1:1000
Comment:	Unigene-Number: Hs.263812 (NCBI Gene Symbol: NUDC)
Restrictions:	For Research Use only

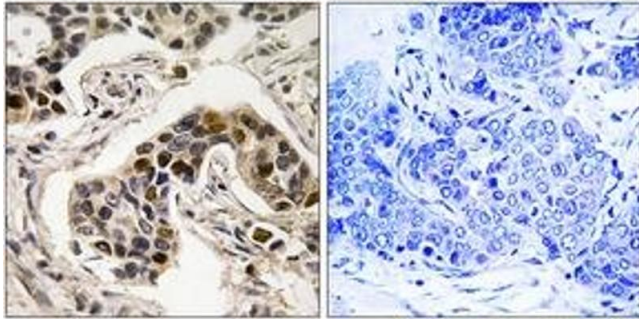
Handling

Format:	Liquid
Concentration:	1 mg/mL
Buffer:	phosphate buffered saline (without Mg ²⁺ and Ca ²⁺), pH 7.4, 150 mM NaCl, 0.02 % sodium azide and 50 % glycerol.
Preservative:	Sodium azide
Precaution of Use:	This product contains sodium azide: a POISONOUS AND HAZARDOUS SUBSTANCE which should be handled by trained staff only.
Storage:	-20 °C
Storage Comment:	Stable at -20°C for at least 1 year.
Expiry Date:	12 months



Western Blotting

Image 1. Western blot analysis of extracts from rat brain, using NudC (Phospho-Ser326) Antibody. The lane on the right is treated with the synthesized peptide.



Immunohistochemistry

Image 2. Immunohistochemistry analysis of paraffin-embedded human breast carcinoma, using NudC (Phospho-Ser326) Antibody. The picture on the right is treated with the synthesized peptide.