

Datasheet for ABIN1532165
anti-Phospholipase D2 antibody (pTyr169)

2 Images

[Go to Product page](#)

Overview

Quantity:	100 µg
Target:	Phospholipase D2 (PLD2)
Binding Specificity:	AA 136-185, pTyr169
Reactivity:	Human, Rat, Mouse
Host:	Rabbit
Clonality:	Polyclonal
Conjugate:	This Phospholipase D2 antibody is un-conjugated
Application:	Western Blotting (WB), ELISA, Immunohistochemistry (IHC)

Product Details

Immunogen:	The antiserum was produced against synthesized peptide derived from human PLD2 around the phosphorylation site of Tyr169.
Isotype:	IgG
Specificity:	PLD2 (Phospho-Tyr169) Antibody detects endogenous levels of PLD2 only when phosphorylated at Tyr169. PhosphorylationH:Y169 M:Y169 R:Y169
Purification:	The antibody was purified from rabbit antiserum by affinity-chromatography using phospho peptide. The antibody against non-phospho peptide was removed by chromatography using corresponding non-phospho peptide.
Purity:	> 95 %

Target Details

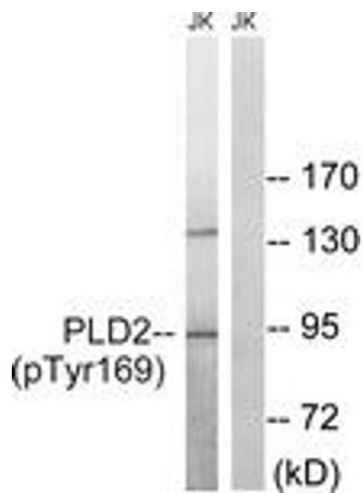
Target:	Phospholipase D2 (PLD2)
Alternative Name:	PLD2 (PLD2 Products)
Background:	Synonyms: choline phosphatase 2, phosphatidylcholine-hydrolyzing phospholipase D2, phospholipase D2, PLD 2, PLD1C NCBI Gene Symbol: PLD2
Molecular Weight:	105 kDa
Gene ID:	5338
OMIM:	602384
UniProt:	O14939
Pathways:	RTK Signaling , Regulation of Leukocyte Mediated Immunity , Positive Regulation of Immune Effector Process , Regulation of G-Protein Coupled Receptor Protein Signaling

Application Details

Application Notes:	WB: 1:500~1:1000 IHC: 1:50~1:100 ELISA: 1:10000
Comment:	Unigene-Number: Hs.104519 (NCBI Gene Symbol: PLD2)
Restrictions:	For Research Use only

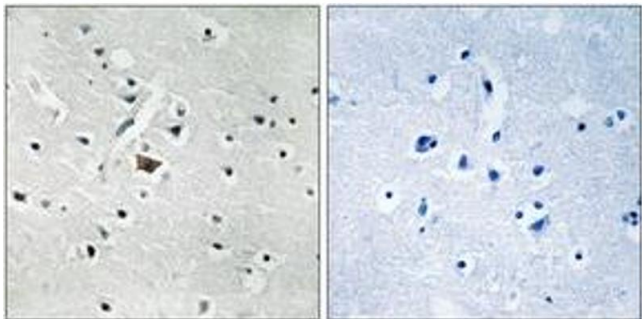
Handling

Format:	Liquid
Concentration:	1 mg/mL
Buffer:	phosphate buffered saline (without Mg ²⁺ and Ca ²⁺), pH 7.4, 150 mM NaCl, 0.02 % sodium azide and 50 % glycerol.
Preservative:	Sodium azide
Precaution of Use:	This product contains sodium azide: a POISONOUS AND HAZARDOUS SUBSTANCE which should be handled by trained staff only.
Storage:	-20 °C
Storage Comment:	Stable at -20°C for at least 1 year.
Expiry Date:	12 months



Western Blotting

Image 1. Western blot analysis of extracts from Jurkat cells treated with TNF 20ng/ml 30', using PLD2 (Phospho-Tyr169) Antibody. The lane on the right is treated with the synthesized peptide.



Immunohistochemistry

Image 2. Immunohistochemistry analysis of paraffin-embedded human brain, using PLD2 (Phospho-Tyr169) Antibody. The picture on the right is treated with the synthesized peptide.