

Datasheet for ABIN1532166
anti-Presenilin 1 antibody (pSer357)



[Go to Product page](#)

2 Images

Overview

Quantity:	100 µL
Target:	Presenilin 1 (PSEN1)
Binding Specificity:	AA 323-372, pSer357
Reactivity:	Human, Mouse, Rat
Host:	Rabbit
Clonality:	Polyclonal
Conjugate:	This Presenilin 1 antibody is un-conjugated
Application:	Western Blotting (WB), ELISA, Immunohistochemistry (IHC)

Product Details

Immunogen:	The antiserum was produced against synthesized peptide derived from human PSEN1 around the phosphorylation site of Ser357.
Isotype:	IgG
Specificity:	PSEN1 (Phospho-Ser357) Antibody detects endogenous levels of PSEN1 only when phosphorylated at Ser357. PhosphorylationH:S357 M:S357 R:S358
Purification:	The antibody was purified from rabbit antiserum by affinity-chromatography using phospho peptide. The antibody against non-phospho peptide was removed by chromatography using corresponding non-phospho peptide.
Purity:	> 95 %

Target Details

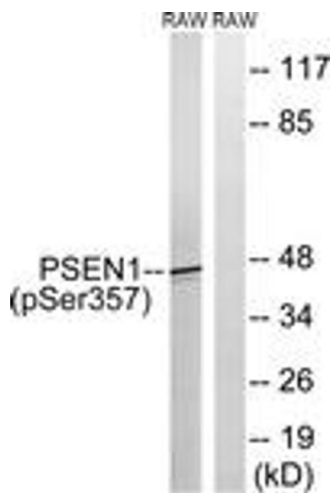
Target:	Presenilin 1 (PSEN1)
Alternative Name:	PSEN1 (PSEN1 Products)
Background:	Synonyms: AD3, AD3H, presenilin 1, PS-1, PS1, PSN1, PSNL1, S182 protein NCBI Gene Symbol: PSEN1
Molecular Weight:	52 kDa
Gene ID:	5663
OMIM:	104311
UniProt:	P49768
Pathways:	Notch Signaling , EGFR Signaling Pathway , Synaptic Vesicle Exocytosis , Dicarboxylic Acid Transport

Application Details

Application Notes:	WB: 1:500~1:1000 IHC: 1:50~1:100 ELISA: 1:5000
Comment:	Unigene-Number: Hs.3260 (NCBI Gene Symbol: PSEN1)
Restrictions:	For Research Use only

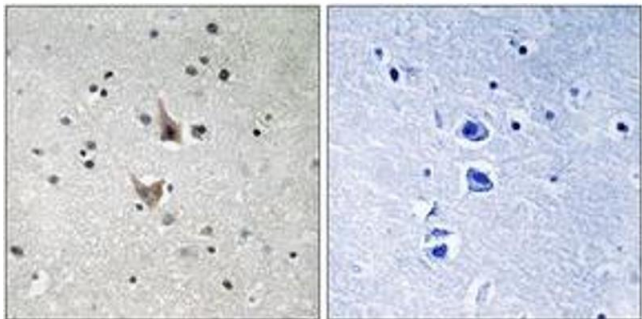
Handling

Format:	Liquid
Concentration:	1 mg/mL
Buffer:	phosphate buffered saline (without Mg ²⁺ and Ca ²⁺), pH 7.4, 150 mM NaCl, 0.02 % sodium azide and 50 % glycerol.
Preservative:	Sodium azide
Precaution of Use:	This product contains sodium azide: a POISONOUS AND HAZARDOUS SUBSTANCE which should be handled by trained staff only.
Storage:	-20 °C
Storage Comment:	Stable at -20°C for at least 1 year.
Expiry Date:	12 months



Western Blotting

Image 1. Western blot analysis of extracts from RAW264.7 cells treated with UV 5', using PSEN1 (Phospho-Ser357) Antibody. The lane on the right is treated with the synthesized peptide.



Immunohistochemistry

Image 2. Immunohistochemistry analysis of paraffin-embedded human brain, using PSEN1 (Phospho-Ser357) Antibody. The picture on the right is treated with the synthesized peptide.