

Datasheet for ABIN1532170
anti-SREBF1 antibody (pSer439)

2 Images

[Go to Product page](#)

Overview

Quantity:	100 µg
Target:	SREBF1
Binding Specificity:	AA 405-454, pSer439
Reactivity:	Human, Rat
Host:	Rabbit
Clonality:	Polyclonal
Conjugate:	This SREBF1 antibody is un-conjugated
Application:	Western Blotting (WB), ELISA, Immunohistochemistry (IHC)

Product Details

Immunogen:	The antiserum was produced against synthesized peptide derived from human SREBP-1 around the phosphorylation site of Ser439.
Isotype:	IgG
Specificity:	SREBP-1 (Phospho-Ser439) Antibody detects endogenous levels of SREBP-1 only when phosphorylated at Ser439. PhosphorylationH:S439 R:S432
Purification:	The antibody was purified from rabbit antiserum by affinity-chromatography using phospho peptide. The antibody against non-phospho peptide was removed by chromatography using corresponding non-phospho peptide.
Purity:	> 95 %

Target Details

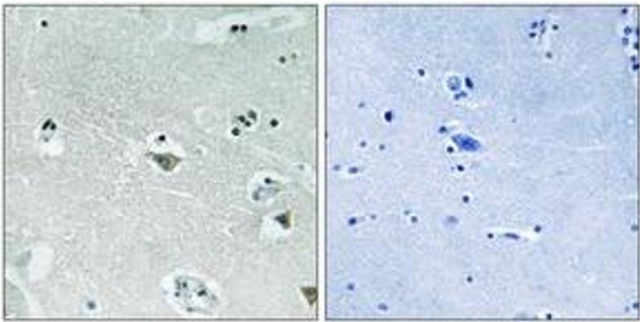
Target:	SREBF1
Alternative Name:	SREBP-1 (SREBF1 Products)
Background:	Synonyms: SRBP1, SREBF1, SREBP1, sterol regulatory element-binding protein 1, sterol regulatory element-binding transcription factor 1 NCBI Gene Symbol: SREBF1
Molecular Weight:	121 kDa
Gene ID:	6720
OMIM:	184756
UniProt:	P36956
Pathways:	AMPK Signaling , Caspase Cascade in Apoptosis , Negative Regulation of Hormone Secretion , Regulation of Lipid Metabolism by PPARalpha

Application Details

Application Notes:	WB: 1:500~1:1000 IHC: 1:50~1:100 ELISA: 1:1000
Comment:	Unigene-Number: Hs.592123, Hs.655395 (NCBI Gene Symbol: SREBF1)
Restrictions:	For Research Use only

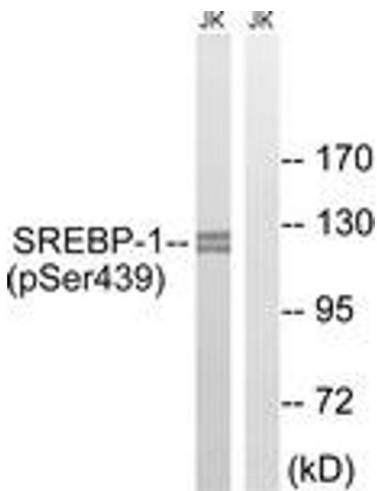
Handling

Format:	Liquid
Concentration:	1 mg/mL
Buffer:	phosphate buffered saline (without Mg ²⁺ and Ca ²⁺), pH 7.4, 150 mM NaCl, 0.02 % sodium azide and 50 % glycerol.
Preservative:	Sodium azide
Precaution of Use:	This product contains sodium azide: a POISONOUS AND HAZARDOUS SUBSTANCE which should be handled by trained staff only.
Storage:	-20 °C
Storage Comment:	Stable at -20°C for at least 1 year.
Expiry Date:	12 months



Immunohistochemistry

Image 1. Immunohistochemistry analysis of paraffin-embedded human brain, using SREBP-1 (Phospho-Ser439) Antibody. The picture on the right is treated with the synthesized peptide.



Western Blotting

Image 2. Western blot analysis of extracts from Jurkat cells treated with TNF 20ng/ml 30', using SREBP-1 (Phospho-Ser439) Antibody. The lane on the right is treated with the synthesized peptide.