

Datasheet for ABIN1532175

anti-Protein Tob1 (TOB1) (AA 130-179), (pSer164) antibody[Go to Product page](#)**2** Images

Overview

Quantity:	100 µg
Target:	Protein Tob1 (TOB1)
Binding Specificity:	AA 130-179, pSer164
Reactivity:	Human, Mouse, Rat
Host:	Rabbit
Clonality:	Polyclonal
Conjugate:	Un-conjugated
Application:	Western Blotting (WB), ELISA, Immunohistochemistry (IHC)

Product Details

Immunogen:	The antiserum was produced against synthesized peptide derived from human TOB1 around the phosphorylation site of Ser164.
Isotype:	IgG
Specificity:	TOB1 (Phospho-Ser164) Antibody detects endogenous levels of TOB1 only when phosphorylated at Ser164. PhosphorylationH:S164 M:S164 R:S164
Purification:	The antibody was purified from rabbit antiserum by affinity-chromatography using phospho peptide. The antibody against non-phospho peptide was removed by chromatography using corresponding non-phospho peptide.
Purity:	> 95 %

Target Details

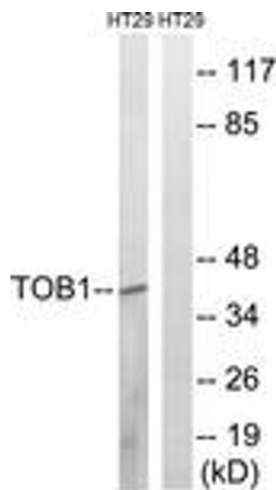
Target:	Protein Tob1 (TOB1)
Alternative Name:	TOB1 (TOB1 Products)
Background:	Synonyms: TOB, Transducer of erbB-2 1 NCBI Gene Symbol: TOB1
Molecular Weight:	38 kDa
Gene ID:	10140
OMIM:	605523
UniProt:	P50616

Application Details

Application Notes:	WB: 1:500~1:1000 IHC: 1:50~1:100 ELISA: 1:5000
Comment:	Unigene-Number: Hs.709952, Hs.714409, Hs.714780 (NCBI Gene Symbol: TOB1)
Restrictions:	For Research Use only

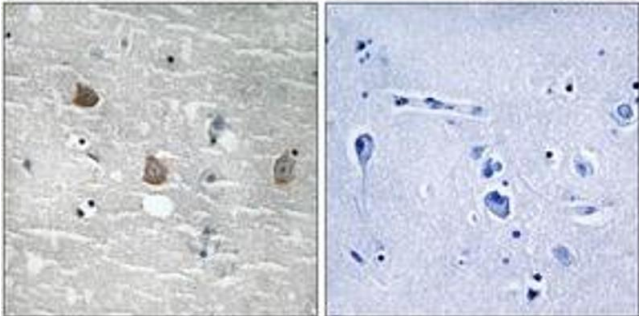
Handling

Format:	Liquid
Concentration:	1 mg/mL
Buffer:	phosphate buffered saline (without Mg ²⁺ and Ca ²⁺), pH 7.4, 150 mM NaCl, 0.02 % sodium azide and 50 % glycerol.
Preservative:	Sodium azide
Precaution of Use:	This product contains sodium azide: a POISONOUS AND HAZARDOUS SUBSTANCE which should be handled by trained staff only.
Storage:	-20 °C
Storage Comment:	Stable at -20°C for at least 1 year.
Expiry Date:	12 months



Western Blotting

Image 1. Western blot analysis of extracts from HT29 cells treated with serum 20% 15', using TOB1 (Phospho-Ser164) Antibody. The lane on the right is treated with the synthesized peptide.



Immunohistochemistry

Image 2. Immunohistochemistry analysis of paraffin-embedded human brain, using TOB1 (Phospho-Ser164) Antibody. The picture on the right is treated with the synthesized peptide.