

Datasheet for ABIN1532240
anti-Crk antibody (AA 187-236)[Go to Product page](#)

3 Images

Overview

Quantity:	100 µg
Target:	Crk (CRK)
Binding Specificity:	AA 187-236
Reactivity:	Human, Mouse, Rat
Host:	Rabbit
Clonality:	Polyclonal
Conjugate:	This Crk antibody is un-conjugated
Application:	Western Blotting (WB), ELISA, Immunohistochemistry (IHC), Immunofluorescence (IF)

Product Details

Immunogen:	The antiserum was produced against synthesized peptide derived from human CrkII.
Isotype:	IgG
Specificity:	CrkII Antibody detects endogenous levels of total CrkII protein.
Purification:	The antibody was purified from rabbit antiserum by affinity-chromatography using immunogen.
Purity:	> 95 %

Target Details

Target:	Crk (CRK)
Alternative Name:	CrkII (CRK Products)
Background:	Synonyms: Adapter molecule crk, CRKO, Crk-II, P38, Proto-oncogene C-crk

Target Details

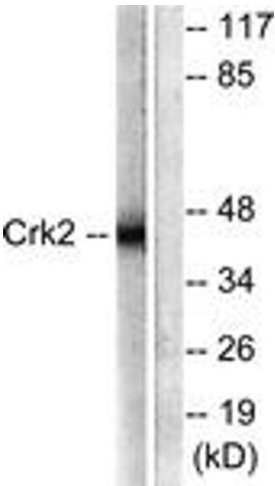
	NCBI Gene Symbol: CRK
Molecular Weight:	33 kDa
Gene ID:	1398
OMIM:	164762
UniProt:	P46108
Pathways:	Neurotrophin Signaling Pathway , CXCR4-mediated Signaling Events , Signaling of Hepatocyte Growth Factor Receptor

Application Details

Application Notes:	WB: 1:500~1:1000 IHC: 1:50~1:100 IF: 1:100~1:500 ELISA: 1:5000
Comment:	Unigene-Number: Hs.638121 (NCBI Gene Symbol: CRK)
Restrictions:	For Research Use only

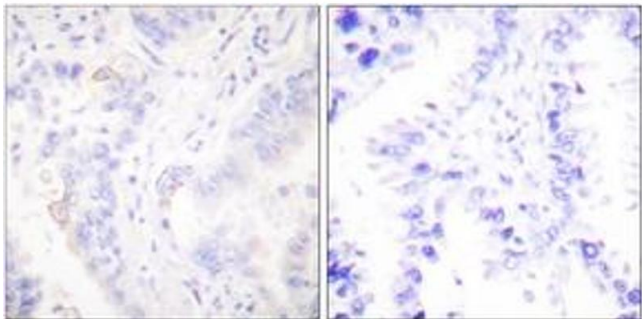
Handling

Format:	Liquid
Concentration:	1 mg/mL
Buffer:	phosphate buffered saline (without Mg ²⁺ and Ca ²⁺), pH 7.4, 150 mM NaCl, 0.02 % sodium azide and 50 % glycerol.
Preservative:	Sodium azide
Precaution of Use:	This product contains sodium azide: a POISONOUS AND HAZARDOUS SUBSTANCE which should be handled by trained staff only.
Storage:	-20 °C
Storage Comment:	Stable at -20°C for at least 1 year.
Expiry Date:	12 months



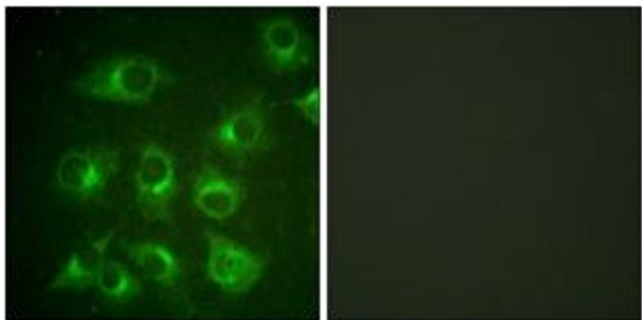
Western Blotting

Image 1. Western blot analysis of extracts from COS7 cells, using CrkII (Ab-221) Antibody. The lane on the right is treated with the synthesized peptide.



Immunohistochemistry

Image 2. Immunohistochemistry analysis of paraffin-embedded human lung carcinoma tissue, using CrkII (Ab-221) Antibody. The picture on the right is treated with the synthesized peptide.



Immunofluorescence

Image 3. Immunofluorescence analysis of HuvEc cells, using CrkII (Ab-221) Antibody. The picture on the right is treated with the synthesized peptide.