

Datasheet for ABIN1532243

## anti-Cyclin E1 antibody (AA 361-410)

3 Images



[Go to Product page](#)

### Overview

Quantity:	100 µL
Target:	Cyclin E1 (CCNE1)
Binding Specificity:	AA 361-410
Reactivity:	Human
Host:	Rabbit
Clonality:	Polyclonal
Conjugate:	This Cyclin E1 antibody is un-conjugated
Application:	Western Blotting (WB), Immunohistochemistry (IHC), ELISA, Immunofluorescence (IF)

### Product Details

Immunogen:	The antiserum was produced against synthesized peptide derived from human Cyclin E1.
Isotype:	IgG
Specificity:	Cyclin E1 Antibody detects endogenous levels of total Cyclin E1 protein.
Purification:	The antibody was purified from rabbit antiserum by affinity-chromatography using immunogen.
Purity:	> 95 %

### Target Details

Target:	Cyclin E1 (CCNE1)
Alternative Name:	Cyclin E1 ( <a href="#">CCNE1 Products</a> )
Background:	Synonyms: CCNE, CCNE1, G1/S-specific cyclin E1

## Target Details

	NCBI Gene Symbol: CCNE1
Molecular Weight:	47 kDa
Gene ID:	898
OMIM:	123837
UniProt:	<a href="#">P24864</a>
Pathways:	<a href="#">Cell Division Cycle</a> , <a href="#">Intracellular Steroid Hormone Receptor Signaling Pathway</a> , <a href="#">Nuclear Hormone Receptor Binding</a> , <a href="#">Mitotic G1-G1/S Phases</a>

## Application Details

Application Notes:	WB: 1:500~1:1000 IHC: 1:50~1:100 IF: 1:100~1:500 ELISA: 1:10000
Comment:	Unigene-Number: Hs.175322 (NCBI Gene Symbol: CCNE1)
Restrictions:	For Research Use only

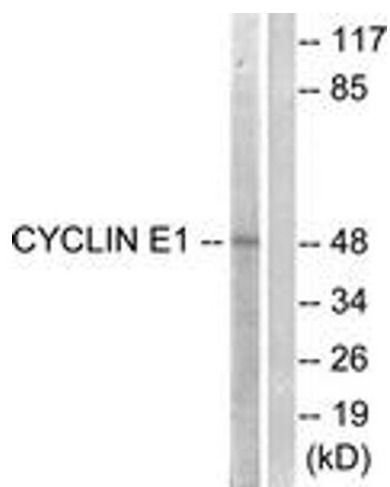
## Handling

Format:	Liquid
Concentration:	1 mg/mL
Buffer:	phosphate buffered saline (without Mg <sup>2+</sup> and Ca <sup>2+</sup> ), pH 7.4, 150 mM NaCl, 0.02 % sodium azide and 50 % glycerol.
Preservative:	Sodium azide
Precaution of Use:	This product contains sodium azide: a POISONOUS AND HAZARDOUS SUBSTANCE which should be handled by trained staff only.
Storage:	-20 °C
Storage Comment:	Stable at -20°C for at least 1 year.
Expiry Date:	12 months



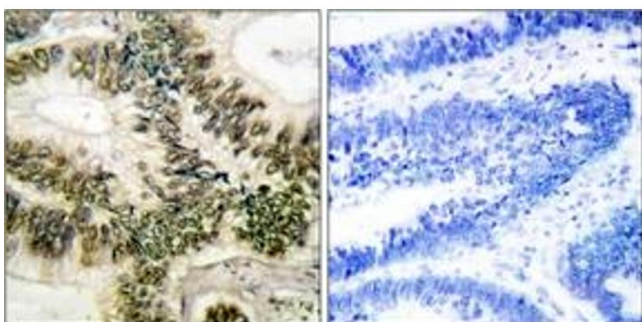
#### Immunofluorescence

**Image 1.** Immunofluorescence analysis of HuvEc cells, using Cyclin E1 (Ab-395) Antibody. The picture on the right is treated with the synthesized peptide.



#### Western Blotting

**Image 2.** Western blot analysis of extracts from HeLa cells, treated with Paclitaxel 1uM 60', using Cyclin E1 (Ab-395) Antibody. The lane on the right is treated with the synthesized peptide.



#### Immunohistochemistry

**Image 3.** Immunohistochemistry analysis of paraffin-embedded human colon carcinoma tissue, using Cyclin E1 (Ab-395) Antibody. The picture on the right is treated with the synthesized peptide.