

Datasheet for ABIN1532296

**anti-Glycogen Synthase antibody (AA 621-670)**[Go to Product page](#)**1** Image

## Overview

Quantity:	100 µg
Target:	Glycogen Synthase (GYS)
Binding Specificity:	AA 621-670
Reactivity:	Human, Mouse, Rat
Host:	Rabbit
Clonality:	Polyclonal
Conjugate:	This Glycogen Synthase antibody is un-conjugated
Application:	Western Blotting (WB), ELISA

## Product Details

Immunogen:	The antiserum was produced against synthesized peptide derived from human Glycogen Synthase.
Isotype:	IgG
Specificity:	Glycogen Synthase Antibody detects endogenous levels of total Glycogen Synthase protein.
Purification:	The antibody was purified from rabbit antiserum by affinity-chromatography using immunogen.
Purity:	> 95 %

## Target Details

Target:	Glycogen Synthase (GYS)
Alternative Name:	Glycogen Synthase ( <a href="#">GYS Products</a> )

## Target Details

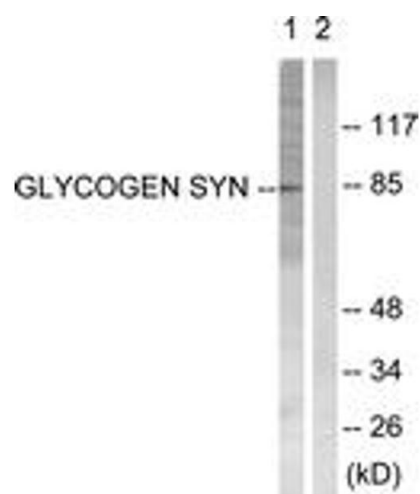
Background:	Synonyms: Glycogen [starch] synthase muscle, GYS1 , GYS NCBI Gene Symbol: GYS1
Molecular Weight:	83 kDa
Gene ID:	2997
OMIM:	138570
UniProt:	<a href="#">P13807</a>

## Application Details

Application Notes:	WB: 1:500~1:1000 ELISA: 1:10000
Comment:	Unigene-Number: Hs.386225 (NCBI Gene Symbol: GYS1)
Restrictions:	For Research Use only

## Handling

Format:	Liquid
Concentration:	1 mg/mL
Buffer:	phosphate buffered saline (without Mg2+ and Ca2+), pH 7.4, 150 mM NaCl, 0.02 % sodium azide and 50 % glycerol.
Preservative:	Sodium azide
Precaution of Use:	This product contains sodium azide: a POISONOUS AND HAZARDOUS SUBSTANCE which should be handled by trained staff only.
Storage:	-20 °C
Storage Comment:	Stable at -20°C for at least 1 year.
Expiry Date:	12 months



Western Blotting

**Image 1.** Western blot analysis of extracts from HeLa cells, treated with Serum 20% 30', using Glycogen Synthase (Ab-645) Antibody. The lane on the right is treated with the synthesized peptide.