

Datasheet for ABIN1532317
anti-SAG antibody (AA 369-418)

3 Images

[Go to Product page](#)

Overview

| | |
|----------------------|---|
| Quantity: | 100 µg |
| Target: | SAG |
| Binding Specificity: | AA 369-418 |
| Reactivity: | Human |
| Host: | Rabbit |
| Clonality: | Polyclonal |
| Conjugate: | This SAG antibody is un-conjugated |
| Application: | Western Blotting (WB), Immunohistochemistry (IHC), ELISA, Immunofluorescence (IF) |

Product Details

| | |
|---------------|---|
| Immunogen: | The antiserum was produced against synthesized peptide derived from human Arrestin 1. |
| Isotype: | IgG |
| Specificity: | Arrestin 1 Antibody detects endogenous levels of total Arrestin 1 protein. |
| Purification: | The antibody was purified from rabbit antiserum by affinity-chromatography using immunogen. |
| Purity: | > 95 % |

Target Details

| | |
|-------------------|--|
| Target: | SAG |
| Alternative Name: | Arrestin 1 (SAG Products) |
| Background: | Synonyms: ARR1, arrestin 2, arrestin beta 1, beta-arrestin-1 |

Target Details

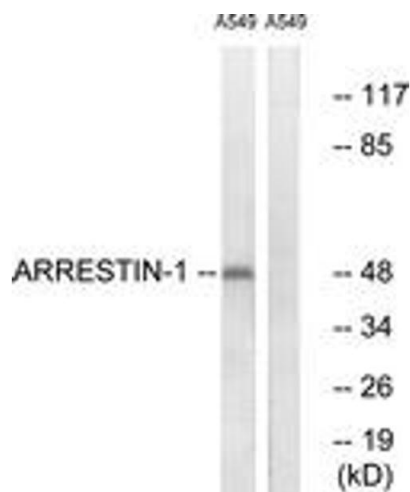
| | |
|-------------------|--|
| | NCBI Gene Symbol: ARRB1 |
| Molecular Weight: | 47 kDa |
| Gene ID: | 408 |
| OMIM: | 107940 |
| UniProt: | P49407 |
| Pathways: | Regulation of G-Protein Coupled Receptor Protein Signaling |

Application Details

| | |
|--------------------|--|
| Application Notes: | WB: 1:500~1:1000 IHC: 1:50~1:100 IF: 1:100~1:500 ELISA: 1:1000 |
| Comment: | Unigene-Number: Hs.503284, Hs.625320 (NCBI Gene Symbol: ARRB1) |
| Restrictions: | For Research Use only |

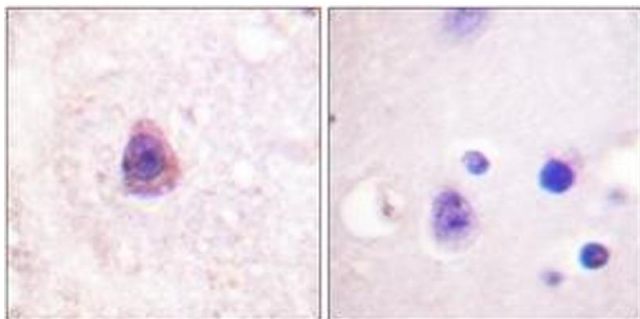
Handling

| | |
|--------------------|---|
| Format: | Liquid |
| Concentration: | 1 mg/mL |
| Buffer: | phosphate buffered saline (without Mg ²⁺ and Ca ²⁺), pH 7.4, 150 mM NaCl, 0.02 % sodium azide and 50 % glycerol. |
| Preservative: | Sodium azide |
| Precaution of Use: | This product contains sodium azide: a POISONOUS AND HAZARDOUS SUBSTANCE which should be handled by trained staff only. |
| Storage: | -20 °C |
| Storage Comment: | Stable at -20°C for at least 1 year. |
| Expiry Date: | 12 months |



Western Blotting

Image 1. Western blot analysis of extracts from A549 cells, treated with Etoposide 25uM 60', using Arrestin 1 (Ab-412) Antibody. The lane on the right is treated with the synthesized peptide.



Immunohistochemistry

Image 2. Immunohistochemistry analysis of paraffin-embedded human brain tissue, using Arrestin 1 (Ab-412) Antibody. The picture on the right is treated with the synthesized peptide.



Immunofluorescence

Image 3. Immunofluorescence analysis of A549 cells, using Arrestin 1 (Ab-412) Antibody. The picture on the right is treated with the synthesized peptide.