

Datasheet for ABIN1532362
anti-MITF antibody (AA 151-200)

3 Images

[Go to Product page](#)

Overview

Quantity:	100 µg
Target:	MITF
Binding Specificity:	AA 151-200
Reactivity:	Human, Mouse
Host:	Rabbit
Clonality:	Polyclonal
Conjugate:	This MITF antibody is un-conjugated
Application:	Western Blotting (WB), Immunofluorescence (IF), Immunohistochemistry (IHC), ELISA

Product Details

Immunogen:	The antiserum was produced against synthesized peptide derived from human MITF.
Isotype:	IgG
Specificity:	MITF Antibody detects endogenous levels of total MITF protein.
Purification:	The antibody was purified from rabbit antiserum by affinity-chromatography using immunogen.
Purity:	> 95 %

Target Details

Target:	MITF
Alternative Name:	MITF (MITF Products)
Background:	Synonyms: MITF M1, Microphthalmia-associated transcription factor

Target Details

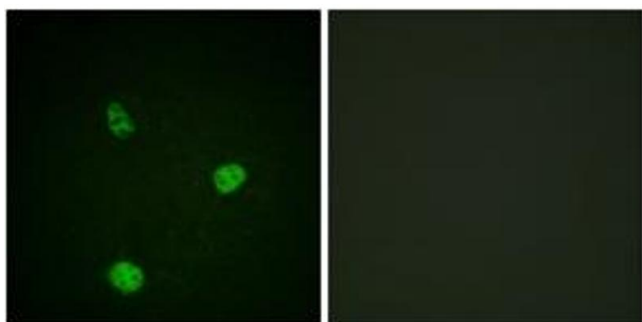
	NCBI Gene Symbol: MITF
Molecular Weight:	58 kDa
Gene ID:	4286
OMIM:	103470
UniProt:	O75030
Pathways:	Chromatin Binding

Application Details

Application Notes:	WB: 1:500~1:1000 IHC: 1:50~1:100 IF: 1:100~1:500 ELISA: 1:10000
Comment:	Unigene-Number: Hs.166017, Hs.618266 (NCBI Gene Symbol: MITF)
Restrictions:	For Research Use only

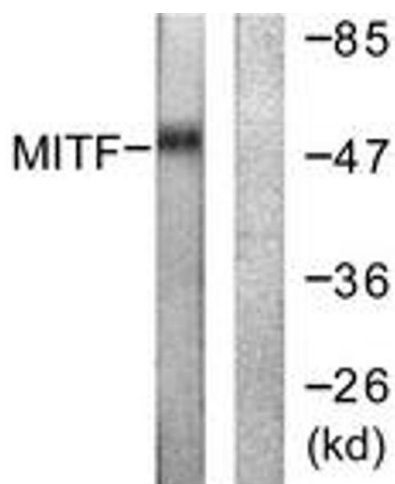
Handling

Format:	Liquid
Concentration:	1 mg/mL
Buffer:	phosphate buffered saline (without Mg ²⁺ and Ca ²⁺), pH 7.4, 150 mM NaCl, 0.02 % sodium azide and 50 % glycerol.
Preservative:	Sodium azide
Precaution of Use:	This product contains sodium azide: a POISONOUS AND HAZARDOUS SUBSTANCE which should be handled by trained staff only.
Storage:	-20 °C
Storage Comment:	Stable at -20°C for at least 1 year.
Expiry Date:	12 months



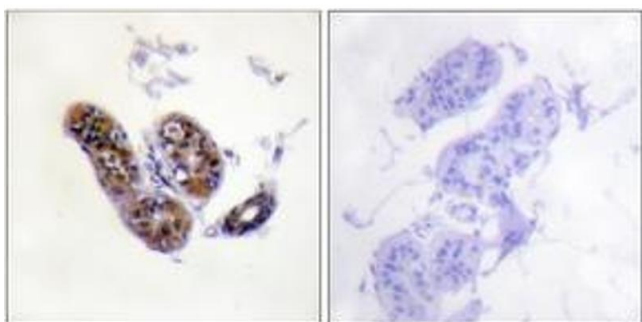
Immunofluorescence

Image 1. Immunofluorescence analysis of HeLa cells, using MITF (Ab-180/73) Antibody. The picture on the right is treated with the synthesized peptide.



Western Blotting

Image 2. Western blot analysis of extracts from HepG2 cells, using MITF (Ab-180/73) Antibody. The lane on the right is treated with the synthesized peptide.



Immunohistochemistry

Image 3. Immunohistochemistry analysis of paraffin-embedded human skin tissue, using MITF (Ab-180/73) Antibody. The picture on the right is treated with the synthesized peptide.