

Datasheet for ABIN1532389  
**anti-PEA15 antibody (AA 81-130)**

## 3 Images

[Go to Product page](#)

## Overview

Quantity:	100 µg
Target:	PEA15
Binding Specificity:	AA 81-130
Reactivity:	Human, Mouse, Rat
Host:	Rabbit
Clonality:	Polyclonal
Conjugate:	This PEA15 antibody is un-conjugated
Application:	Western Blotting (WB), ELISA, Immunohistochemistry (IHC), Immunofluorescence (IF)

## Product Details

Immunogen:	The antiserum was produced against synthesized peptide derived from human PEA-15.
Isotype:	IgG
Specificity:	PEA-15 Antibody detects endogenous levels of total PEA-15 protein.
Purification:	The antibody was purified from rabbit antiserum by affinity-chromatography using immunogen.
Purity:	> 95 %

## Target Details

Target:	PEA15
Alternative Name:	PEA-15 ( <a href="#">PEA15 Products</a> )
Background:	Synonyms: Astrocytic phosphoprotein PEA-15, PE15, PEA15, PED, Phosphoprotein enriched in

## Target Details

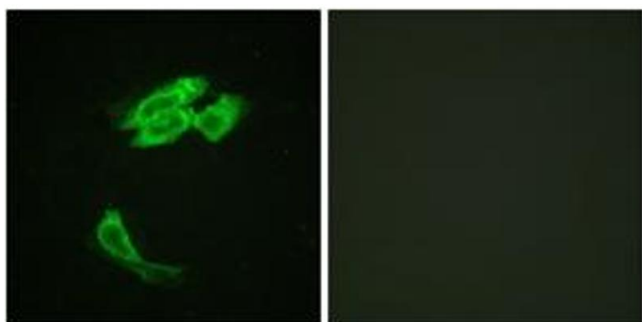
	diabetes
	NCBI Gene Symbol: PEA15
Molecular Weight:	15 kDa
Gene ID:	8682
OMIM:	603434
UniProt:	<a href="#">Q15121</a>

## Application Details

Application Notes:	WB: 1:500~1:1000 IHC: 1:50~1:100 IF: 1:100~1:500 ELISA: 1:40000
Comment:	Unigene-Number: Hs.517216 (NCBI Gene Symbol: PEA15)
Restrictions:	For Research Use only

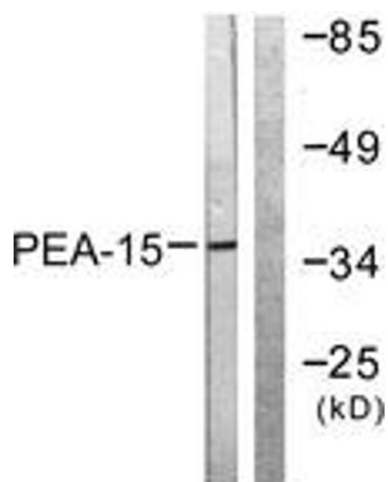
## Handling

Format:	Liquid
Concentration:	1 mg/mL
Buffer:	phosphate buffered saline (without Mg <sup>2+</sup> and Ca <sup>2+</sup> ), pH 7.4, 150 mM NaCl, 0.02 % sodium azide and 50 % glycerol.
Preservative:	Sodium azide
Precaution of Use:	This product contains sodium azide: a POISONOUS AND HAZARDOUS SUBSTANCE which should be handled by trained staff only.
Storage:	-20 °C
Storage Comment:	Stable at -20°C for at least 1 year.
Expiry Date:	12 months



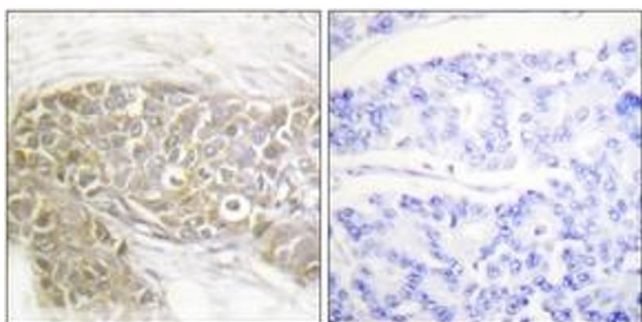
#### Immunofluorescence

**Image 1.** Immunofluorescence analysis of HeLa cells, using PEA-15 (Ab-116) Antibody. The picture on the right is treated with the synthesized peptide.



#### Western Blotting

**Image 2.** Western blot analysis of extracts from Jurkat cells, treated with PMA 125ng/ml 30', using PEA-15 (Ab-116) Antibody. The lane on the right is treated with the synthesized peptide.



#### Immunohistochemistry

**Image 3.** Immunohistochemistry analysis of paraffin-embedded human breast carcinoma tissue, using PEA-15 (Ab-116) Antibody. The picture on the right is treated with the synthesized peptide.