

Datasheet for ABIN1532406
anti-RHOA antibody (AA 144-193)



[Go to Product page](#)

2 Images

Overview

Quantity:	100 µL
Target:	RHOA
Binding Specificity:	AA 144-193
Reactivity:	Human, Mouse, Rat
Host:	Rabbit
Clonality:	Polyclonal
Conjugate:	This RHOA antibody is un-conjugated
Application:	Western Blotting (WB), ELISA, Immunohistochemistry (IHC)

Product Details

Immunogen:	The antiserum was produced against synthesized peptide derived from human RhoA.
Isotype:	IgG
Specificity:	RhoA Antibody detects endogenous levels of total RhoA protein.
Purification:	The antibody was purified from rabbit antiserum by affinity-chromatography using immunogen.
Purity:	> 95 %

Target Details

Target:	RHOA
Alternative Name:	RhoA (RHOA Products)
Background:	Synonyms: ARH12, ARHA, ARHA2, H12, RH012, Transforming protein RhoA

Target Details

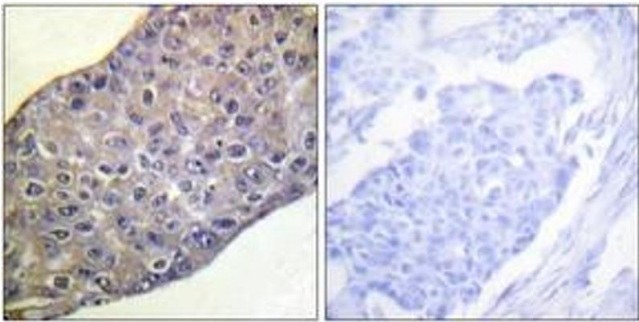
	NCBI Gene Symbol: RHOA
Molecular Weight:	21 kDa
Gene ID:	387
OMIM:	165390
UniProt:	P61586
Pathways:	Microtubule Dynamics , WNT Signaling , Neurotrophin Signaling Pathway , Intracellular Steroid Hormone Receptor Signaling Pathway , Regulation of Intracellular Steroid Hormone Receptor Signaling , Regulation of Actin Filament Polymerization , Cell-Cell Junction Organization , Positive Regulation of Endopeptidase Activity , Signaling Events mediated by VEGFR1 and VEGFR2 , Thromboxane A2 Receptor Signaling , SARS-CoV-2 Protein Interactome

Application Details

Application Notes:	WB: 1:500~1:1000 IHC: 1:50~1:100 ELISA: 1:1000
Comment:	Unigene-Number: Hs.247077 (NCBI Gene Symbol: RHOA)
Restrictions:	For Research Use only

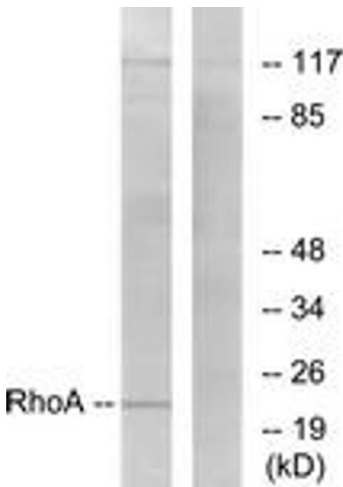
Handling

Format:	Liquid
Concentration:	1 mg/mL
Buffer:	phosphate buffered saline (without Mg ²⁺ and Ca ²⁺), pH 7.4, 150 mM NaCl, 0.02 % sodium azide and 50 % glycerol.
Preservative:	Sodium azide
Precaution of Use:	This product contains sodium azide: a POISONOUS AND HAZARDOUS SUBSTANCE which should be handled by trained staff only.
Storage:	-20 °C
Storage Comment:	Stable at -20°C for at least 1 year.
Expiry Date:	12 months



Immunohistochemistry

Image 1. Immunohistochemistry analysis of paraffin-embedded human breast carcinoma tissue, using RhoA (Ab-188) Antibody. The picture on the right is treated with the synthesized peptide.



Western Blotting

Image 2. Western blot analysis of extracts from HepG2 cells, using RhoA (Ab-188) Antibody. The lane on the right is treated with the synthesized peptide.