



[Go to Product page](#)

Datasheet for ABIN1532407

anti-Rhodopsin antibody (AA 299-348)

2 Images

1 Publication

Overview

Quantity:	100 µg
Target:	Rhodopsin (RHO)
Binding Specificity:	AA 299-348
Reactivity:	Human, Rat, Mouse
Host:	Rabbit
Clonality:	Polyclonal
Conjugate:	This Rhodopsin antibody is un-conjugated
Application:	Western Blotting (WB), Immunohistochemistry (IHC), ELISA

Product Details

Immunogen:	The antiserum was produced against synthesized peptide derived from human Rhodopsin.
Isotype:	IgG
Specificity:	Rhodopsin Antibody detects endogenous levels of total Rhodopsin protein.
Purification:	The antibody was purified from rabbit antiserum by affinity-chromatography using immunogen.
Purity:	> 95 %

Target Details

Target:	Rhodopsin (RHO)
Alternative Name:	Rhodopsin (RHO Products)
Target Type:	Chemical

Target Details

Background:	Synonyms: Rhodopsin, Opsin-2, RHO, OPN2 NCBI Gene Symbol: OPSD
Molecular Weight:	39 kDa
Gene ID:	6010
OMIM:	180380
UniProt:	P08100
Pathways:	WNT Signaling , Sensory Perception of Sound , Regulation of G-Protein Coupled Receptor Protein Signaling , Phototransduction

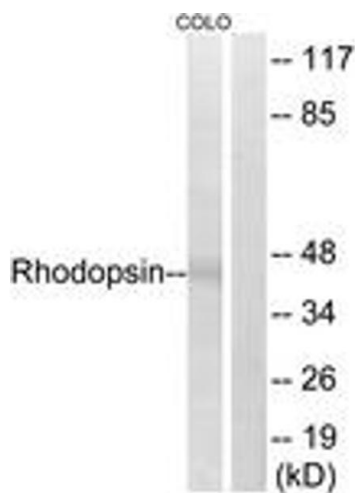
Application Details

Application Notes:	WB: 1:500~1:1000 IHC: 1:50~1:100 ELISA: 1:1000
Comment:	Unigene-Number: Hs.247565 (NCBI Gene Symbol: OPSD)
Restrictions:	For Research Use only

Handling

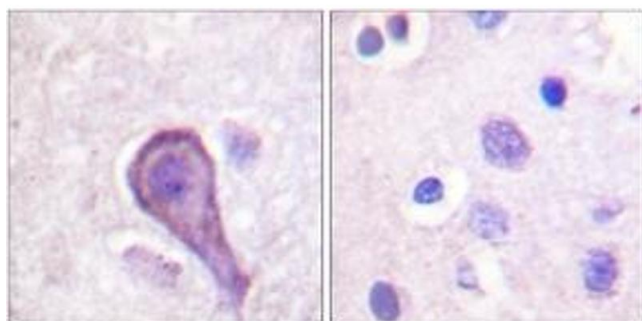
Format:	Liquid
Concentration:	1 mg/mL
Buffer:	phosphate buffered saline (without Mg ²⁺ and Ca ²⁺), pH 7.4, 150 mM NaCl, 0.02 % sodium azide and 50 % glycerol.
Preservative:	Sodium azide
Precaution of Use:	WARNING: Reagents contain sodium azide. Sodium azide is very toxic if ingested or inhaled. Avoid contact with skin, eyes, or clothing. Wear eye or face protection when handling. If skin or eye contact occurs, wash with copious amounts of water. If ingested or inhaled, contact a physician immediately. Sodium azide yields toxic hydrazoic acid under acidic conditions. Dilute azide-containing compounds in running water before discarding to avoid accumulation of potentially explosive deposits in lead or copper plumbing.
Storage:	-20 °C
Storage Comment:	Stable at -20°C for at least 1 year.
Expiry Date:	12 months

Product cited in: Sekino, Nakano, Hamaue, Chuganji, Sakamoto, Yoshimura, Origuchi, Okita: "Sensory hyperinnervation and increase in NGF, TRPV1 and P2X3 expression in the epidermis following cast immobilization in rats." in: **European journal of pain (London, England)**, Vol. 18, Issue 5, pp. 639-48, (2014) ([PubMed](#)).



Western Blotting

Image 1. Western blot analysis of extracts from COLO cells, using Rhodopsin (Ab-334) Antibody. The lane on the right is treated with the synthesized peptide.



Immunohistochemistry (Paraffin-embedded Sections)

Image 2. Immunohistochemistry analysis of paraffin-embedded human brain tissue, using Rhodopsin (Ab-334) Antibody. The picture on the right is treated with the synthesized peptide.