



[Go to Product page](#)

Datasheet for ABIN1532418
anti-NKX2-1 antibody (AA 79-128)

2 Images

Overview

Quantity:	100 µg
Target:	NKX2-1
Binding Specificity:	AA 79-128
Reactivity:	Human, Mouse, Rat
Host:	Rabbit
Clonality:	Polyclonal
Conjugate:	This NKX2-1 antibody is un-conjugated
Application:	Western Blotting (WB), ELISA, Immunohistochemistry (IHC)

Product Details

Immunogen:	The antiserum was produced against synthesized peptide derived from human TEBP.
Isotype:	IgG
Specificity:	TEBP Antibody detects endogenous levels of total TEBP protein.
Purification:	The antibody was purified from rabbit antiserum by affinity-chromatography using immunogen.
Purity:	> 95 %

Target Details

Target:	NKX2-1
Alternative Name:	TEBP (NKX2-1 Products)
Background:	Synonyms: Prostaglandin E synthase 3, Cytosolic prostaglandin E2 synthase, cPGES,

Target Details

Telomerase-binding protein p23, Hsp90 co-chaperone, Progesterone receptor complex p23, PTGES3P23, TEBP
NCBI Gene Symbol: PTGES3

Molecular Weight: 18 kDa

Gene ID: 10728

OMIM: 607061

UniProt: [Q15185](#)

Pathways: [Intracellular Steroid Hormone Receptor Signaling Pathway](#), [Regulation of Systemic Arterial Blood Pressure by Hormones](#), [Cellular Glucan Metabolic Process](#), [Feeding Behaviour](#)

Application Details

Application Notes: WB: 1:500~1:1000 IHC: 1:50~1:100 ELISA: 1:1000

Comment: Unigene-Number: Hs.50425 (NCBI Gene Symbol: PTGES3)

Restrictions: For Research Use only

Handling

Format: Liquid

Concentration: 1 mg/mL

Buffer: phosphate buffered saline (without Mg²⁺ and Ca²⁺), pH 7.4, 150 mM NaCl, 0.02 % sodium azide and 50 % glycerol.

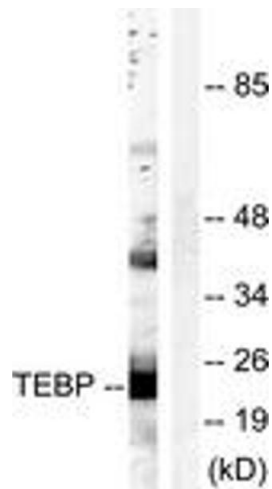
Preservative: Sodium azide

Precaution of Use: This product contains sodium azide: a POISONOUS AND HAZARDOUS SUBSTANCE which should be handled by trained staff only.

Storage: -20 °C

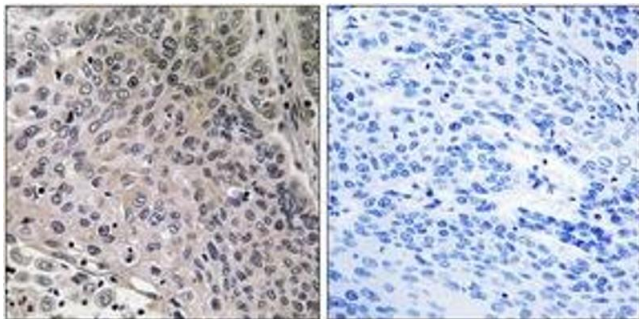
Storage Comment: Stable at -20°C for at least 1 year.

Expiry Date: 12 months



Western Blotting

Image 1. Western blot analysis of extracts from NIH-3T3 cells, treated with EGF 200ng/ml 30', using TEBP (Ab-113) Antibody. The lane on the right is treated with the synthesized peptide.



Immunohistochemistry

Image 2. Immunohistochemistry analysis of paraffin-embedded human breast carcinoma tissue, using TEBP (Ab-113) Antibody. The picture on the right is treated with the synthesized peptide.