

Datasheet for ABIN1532423
anti-Tuberin antibody (AA 905-954)



[Go to Product page](#)

3 Images

Overview

Quantity:	100 µL
Target:	Tuberin (TSC2)
Binding Specificity:	AA 905-954
Reactivity:	Human, Mouse, Rat
Host:	Rabbit
Clonality:	Polyclonal
Conjugate:	This Tuberin antibody is un-conjugated
Application:	ELISA, Western Blotting (WB), Immunohistochemistry (IHC), Immunofluorescence (IF)

Product Details

Immunogen:	The antiserum was produced against synthesized peptide derived from human Tuberin/TSC2.
Isotype:	IgG
Specificity:	Tuberin/TSC2 Antibody detects endogenous levels of total Tuberin/TSC2 protein.
Purification:	The antibody was purified from rabbit antiserum by affinity-chromatography using immunogen.
Purity:	> 95 %

Target Details

Target:	Tuberin (TSC2)
Alternative Name:	Tuberin/TSC2 (TSC2 Products)
Background:	Synonyms: TSC2, tuberous sclerosis 2 gene, Tuberous sclerosis 2 homolog protein, Tuberous

Target Details

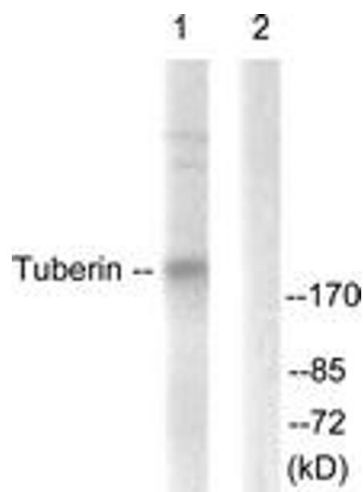
	sclerosis 2 protein NCBI Gene Symbol: TSC2
Molecular Weight:	200 kDa
Gene ID:	7249
OMIM:	191092
UniProt:	P49815
Pathways:	RTK Signaling , AMPK Signaling , Fc-epsilon Receptor Signaling Pathway , EGFR Signaling Pathway , Neurotrophin Signaling Pathway , Regulation of Cell Size , Tube Formation , Protein targeting to Nucleus

Application Details

Application Notes:	WB: 1:500~1:1000 IHC: 1:50~1:100 IF: 1:100~1:500 ELISA: 1:10000
Comment:	Unigene-Number: Hs.90303 (NCBI Gene Symbol: TSC2)
Restrictions:	For Research Use only

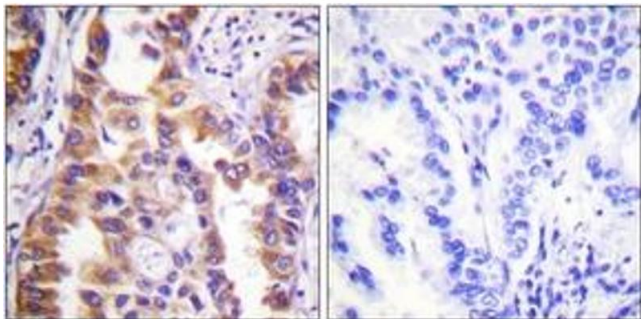
Handling

Format:	Liquid
Concentration:	1 mg/mL
Buffer:	phosphate buffered saline (without Mg2+ and Ca2+), pH 7.4, 150 mM NaCl, 0.02 % sodium azide and 50 % glycerol.
Preservative:	Sodium azide
Precaution of Use:	This product contains sodium azide: a POISONOUS AND HAZARDOUS SUBSTANCE which should be handled by trained staff only.
Storage:	-20 °C
Storage Comment:	Stable at -20°C for at least 1 year.
Expiry Date:	12 months



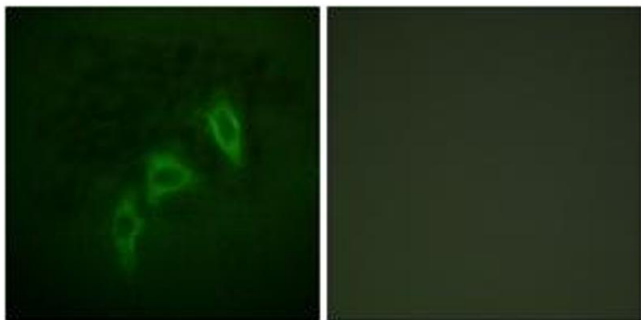
Western Blotting

Image 1. Western blot analysis of extracts from 293 cells, treated with Anisomycin 25ug/ml 30', using Tuberin/TSC2 (Ab-939) Antibody. The lane on the right is treated with the synthesized peptide.



Immunohistochemistry

Image 2. Immunohistochemistry analysis of paraffin-embedded human lung carcinoma tissue, using Tuberin/TSC2 (Ab-939) Antibody. The picture on the right is treated with the synthesized peptide.



Immunofluorescence

Image 3. Immunofluorescence analysis of HepG2 cells, using Tuberin/TSC2 (Ab-939) Antibody. The picture on the right is treated with the synthesized peptide.