

Datasheet for ABIN1532430  
**anti-WASF1 antibody (AA 91-140)**[Go to Product page](#)

## 3 Images

## Overview

Quantity:	100 µg
Target:	WASF1
Binding Specificity:	AA 91-140
Reactivity:	Human, Mouse, Rat
Host:	Rabbit
Clonality:	Polyclonal
Conjugate:	This WASF1 antibody is un-conjugated
Application:	Western Blotting (WB), ELISA, Immunohistochemistry (IHC), Immunofluorescence (IF)

## Product Details

Immunogen:	The antiserum was produced against synthesized peptide derived from human WAVE1.
Isotype:	IgG
Specificity:	WAVE1 Antibody detects endogenous levels of total WAVE1 protein.
Purification:	The antibody was purified from rabbit antiserum by affinity-chromatography using immunogen.
Purity:	> 95 %

## Target Details

Target:	WASF1
Alternative Name:	WAVE1 ( <a href="#">WASF1 Products</a> )
Background:	Synonyms: KIAA0269, SCAR1, Verprolin homology domain-containing protein 1, WAS1, WASF1,

## Target Details

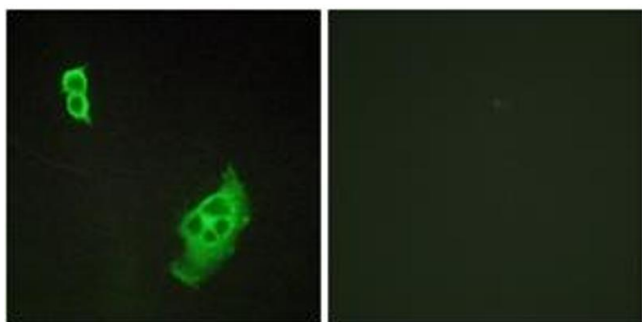
	WASP-family protein member 1, Wiskott-Aldrich syndrome protein family member 1 NCBI Gene Symbol: WASF1
Molecular Weight:	61 kDa
Gene ID:	8936
OMIM:	605035
UniProt:	<a href="#">Q92558</a>
Pathways:	<a href="#">RTK Signaling, Regulation of Actin Filament Polymerization</a>

## Application Details

Application Notes:	WB: 1:500~1:1000 IHC: 1:50~1:100 IF: 1:100~1:500 ELISA: 1:40000
Comment:	Unigene-Number: Hs.75850 (NCBI Gene Symbol: WASF1)
Restrictions:	For Research Use only

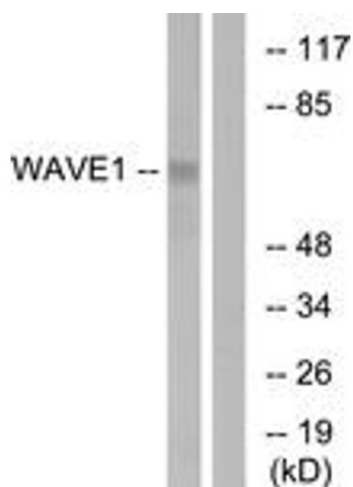
## Handling

Format:	Liquid
Concentration:	1 mg/mL
Buffer:	phosphate buffered saline (without Mg <sup>2+</sup> and Ca <sup>2+</sup> ), pH 7.4, 150 mM NaCl, 0.02 % sodium azide and 50 % glycerol.
Preservative:	Sodium azide
Precaution of Use:	This product contains sodium azide: a POISONOUS AND HAZARDOUS SUBSTANCE which should be handled by trained staff only.
Storage:	-20 °C
Storage Comment:	Stable at -20°C for at least 1 year.
Expiry Date:	12 months



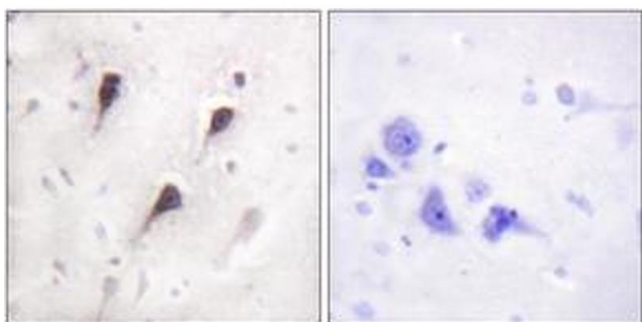
### Immunofluorescence

**Image 1.** Immunofluorescence analysis of COS7 cells, using WAVE1 (Ab-125) Antibody. The picture on the right is treated with the synthesized peptide.



### Western Blotting

**Image 2.** Western blot analysis of extracts from 293 cells, treated with insulin 0.01U/ml 15', using WAVE1 (Ab-125) Antibody. The lane on the right is treated with the synthesized peptide.



### Immunohistochemistry

**Image 3.** Immunohistochemistry analysis of paraffin-embedded human brain tissue, using WAVE1 (Ab-125) Antibody. The picture on the right is treated with the synthesized peptide.