



Datasheet for ABIN1532484
anti-PPP1CA antibody (AA 281-330)



[Go to Product page](#)

2 Images

Overview

| | |
|----------------------|--|
| Quantity: | 100 µg |
| Target: | PPP1CA |
| Binding Specificity: | AA 281-330 |
| Reactivity: | Human, Mouse, Rat |
| Host: | Rabbit |
| Clonality: | Polyclonal |
| Conjugate: | This PPP1CA antibody is un-conjugated |
| Application: | Western Blotting (WB), ELISA, Immunohistochemistry (IHC) |

Product Details

| | |
|---------------|---|
| Immunogen: | The antiserum was produced against synthesized peptide derived from human PP1-alpha. |
| Isotype: | IgG |
| Specificity: | PP1-alpha Antibody detects endogenous levels of total PP1-alpha protein. |
| Purification: | The antibody was purified from rabbit antiserum by affinity-chromatography using immunogen. |
| Purity: | > 95 % |

Target Details

| | |
|-------------------|--|
| Target: | PPP1CA |
| Alternative Name: | PP1-alpha (PPP1CA Products) |
| Background: | Synonyms: PP-1A, PP1A, PPP1A, Serine/threonine protein phosphatase PP1-alpha 1 catalytic |

Target Details

subunit, Serine/threonine protein phosphatase PP1-alpha 1, catalytic subunit
NCBI Gene Symbol: PPP1CA

Molecular Weight: 37 kDa

Gene ID: 5499

OMIM: 176875

UniProt: [P62136](#)

Pathways: [M Phase](#), [Cellular Glucan Metabolic Process](#), [Regulation of Carbohydrate Metabolic Process](#),
[Lipid Metabolism](#)

Application Details

Application Notes: WB: 1:500~1:1000 IHC: 1:50~1:100 ELISA: 1:1000

Comment: Unigene-Number: Hs.183994 (NCBI Gene Symbol: PPP1CA)

Restrictions: For Research Use only

Handling

Format: Liquid

Concentration: 1 mg/mL

Buffer: phosphate buffered saline (without Mg²⁺ and Ca²⁺), pH 7.4, 150 mM NaCl, 0.02 % sodium azide and 50 % glycerol.

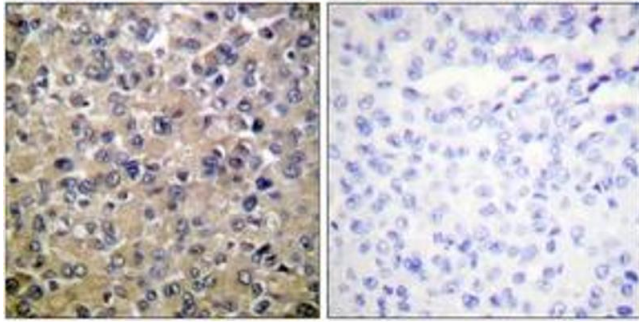
Preservative: Sodium azide

Precaution of Use: This product contains sodium azide: a POISONOUS AND HAZARDOUS SUBSTANCE which should be handled by trained staff only.

Storage: -20 °C

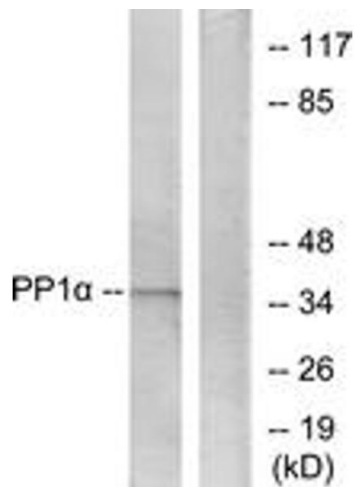
Storage Comment: Stable at -20°C for at least 1 year.

Expiry Date: 12 months



Immunohistochemistry

Image 1. Immunohistochemistry analysis of paraffin-embedded human breast carcinoma tissue, using PP1-alpha (Ab-320) Antibody. The picture on the right is treated with the synthesized peptide.



Western Blotting

Image 2. Western blot analysis of extracts from Jurkat cells, using PP1-alpha (Ab-320) Antibody. The lane on the right is treated with the synthesized peptide.