

Datasheet for ABIN1532495
anti-Actin antibody (AA 21-70)

3 Images

[Go to Product page](#)

Overview

Quantity:	100 µg
Target:	Actin
Binding Specificity:	AA 21-70
Reactivity:	Human, Rat, Mouse
Host:	Rabbit
Clonality:	Polyclonal
Conjugate:	This Actin antibody is un-conjugated
Application:	Western Blotting (WB), Immunohistochemistry (IHC), ELISA, Immunofluorescence (IF)

Product Details

Immunogen:	The antiserum was produced against synthesized peptide derived from human Actin.
Isotype:	IgG
Specificity:	Actin-pan Antibody detects endogenous levels of total Actin protein.
Purification:	The antibody was purified from rabbit antiserum by affinity-chromatography using immunogen.
Purity:	> 95 %

Target Details

Target:	Actin
Abstract:	Actin Products
Background:	Synonyms: ACTA, ACTA1, ACTS, Actin, alpha skeletal muscle, Alpha-actin 1, ACTB, Actin,

Target Details

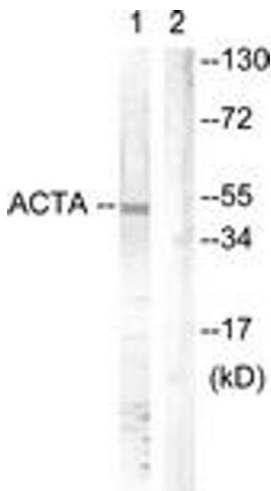
	cytoplasmic 1, Beta-actin, ACTG, ACTG1, actin, cytoplasmic 2, gamma-actin NCBI Gene Symbol: ACTC1
Molecular Weight:	41 kDa
Gene ID:	58, 70, 71
OMIM:	102540
UniProt:	P68032 , P63261 , P63267 , P68133

Application Details

Application Notes:	WB: 1:500~1:1000 IHC: 1:50~1:100 IF: 1:100~1:500 ELISA: 1:10000
Comment:	Unigene-Number: Hs.118127, Hs.514581, Hs.1288 (NCBI Gene Symbol: ACTC1)
Restrictions:	For Research Use only

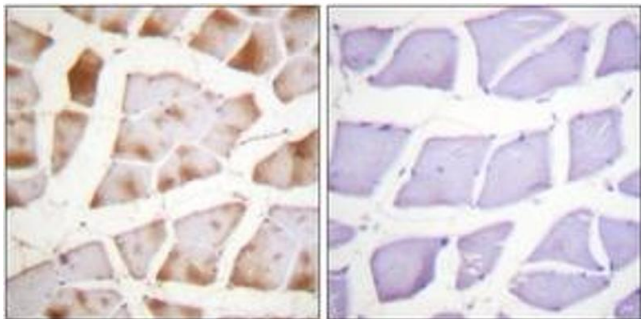
Handling

Format:	Liquid
Concentration:	1 mg/mL
Buffer:	phosphate buffered saline (without Mg ²⁺ and Ca ²⁺), pH 7.4, 150 mM NaCl, 0.02 % sodium azide and 50 % glycerol.
Preservative:	Sodium azide
Precaution of Use:	This product contains sodium azide: a POISONOUS AND HAZARDOUS SUBSTANCE which should be handled by trained staff only.
Storage:	-20 °C
Storage Comment:	Stable at -20°C for at least 1 year.
Expiry Date:	12 months



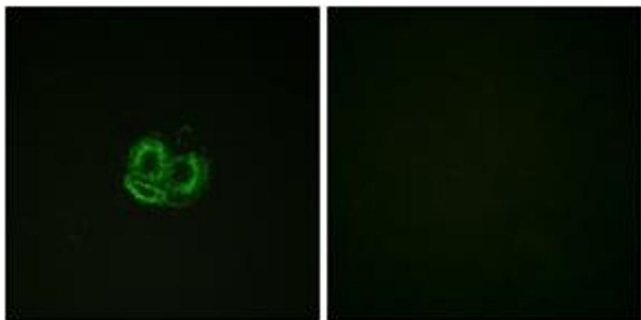
Western Blotting

Image 1. Western blot analysis of extracts from mouse brain cells, using Actin-pan (alpha/gamma) (Ab-55/53) Antibody. The lane on the right is treated with the synthesized peptide.



Immunohistochemistry

Image 2. Immunohistochemistry analysis of paraffin-embedded human skeletal muscle tissue, using Actin-pan (alpha/gamma) (Ab-55/53) Antibody. The picture on the right is treated with the synthesized peptide.



Immunofluorescence

Image 3. Immunofluorescence analysis of HuvEc cells, using Actin-pan (alpha/gamma) (Ab-55/53) Antibody. The picture on the right is treated with the synthesized peptide.