

Datasheet for ABIN1532497

anti-Aryl Hydrocarbon Receptor antibody (AA 2-51)[Go to Product page](#)**3** Images

Overview

Quantity:	100 µL
Target:	Aryl Hydrocarbon Receptor (AHR)
Binding Specificity:	AA 2-51
Reactivity:	Human, Mouse, Rat
Host:	Rabbit
Clonality:	Polyclonal
Conjugate:	This Aryl Hydrocarbon Receptor antibody is un-conjugated
Application:	Western Blotting (WB), Immunohistochemistry (IHC), ELISA, Immunofluorescence (IF)

Product Details

Immunogen:	The antiserum was produced against synthesized peptide derived from human AhR.
Isotype:	IgG
Specificity:	AhR Antibody detects endogenous levels of total AhR protein.
Purification:	The antibody was purified from rabbit antiserum by affinity-chromatography using immunogen.
Purity:	> 95 %

Target Details

Target:	Aryl Hydrocarbon Receptor (AHR)
Alternative Name:	AhR (AHR Products)
Background:	Synonyms: Aryl hydrocarbon receptor, Ah receptor, AhR, Class E basic helix-loop-helix protein

Target Details

76, bHLHe76, BHLHE76
NCBI Gene Symbol: AHR

Molecular Weight: 96 kDa

Gene ID: 196, 57491

OMIM: 600253

UniProt: [P35869](#), [A9YTQ3](#)

Pathways: [Regulation of Cell Size](#)

Application Details

Application Notes: WB: 1:500~1:1000 IHC: 1:50~1:100 IF: 1:100~1:500 ELISA: 1:1000

Comment: Unigene-Number: Hs.171189Hs.50823 (NCBI Gene Symbol: AHR)

Restrictions: For Research Use only

Handling

Format: Liquid

Concentration: 1 mg/mL

Buffer: phosphate buffered saline (without Mg²⁺ and Ca²⁺), pH 7.4, 150 mM NaCl, 0.02 % sodium azide and 50 % glycerol.

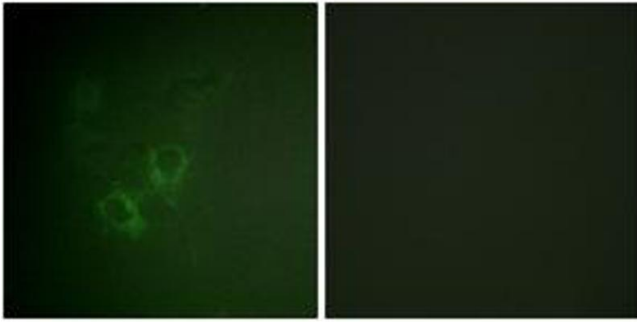
Preservative: Sodium azide

Precaution of Use: This product contains sodium azide: a POISONOUS AND HAZARDOUS SUBSTANCE which should be handled by trained staff only.

Storage: -20 °C

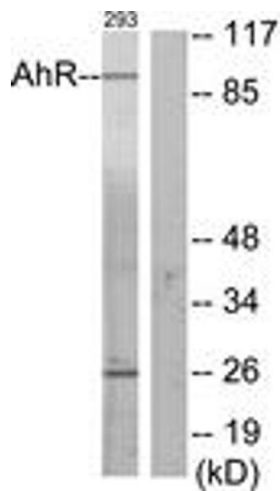
Storage Comment: Stable at -20°C for at least 1 year.

Expiry Date: 12 months



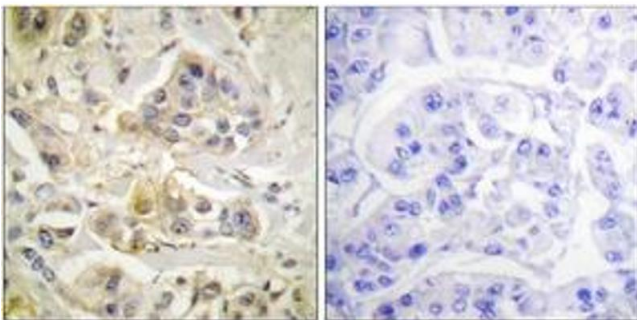
Immunofluorescence

Image 1. Immunofluorescence analysis of HeLa cells, using AhR (Ab-36) Antibody. The picture on the right is treated with the synthesized peptide.



Western Blotting

Image 2. Western blot analysis of extracts from 293 cells, using AhR (Ab-36) Antibody. The lane on the right is treated with the synthesized peptide.



Immunohistochemistry

Image 3. Immunohistochemistry analysis of paraffin-embedded human breast carcinoma tissue, using AhR (Ab-36) Antibody. The picture on the right is treated with the synthesized peptide.