

Datasheet for ABIN1532523
anti-PKC antibody (Thr497)[Go to Product page](#)

3 Images

Overview

| | |
|----------------------|---|
| Quantity: | 100 µg |
| Target: | PKC (PKC pan) |
| Binding Specificity: | Thr497 |
| Reactivity: | Human, Mouse, Rat |
| Host: | Rabbit |
| Clonality: | Polyclonal |
| Conjugate: | This PKC antibody is un-conjugated |
| Application: | Western Blotting (WB), Immunofluorescence (IF), Immunohistochemistry (IHC), ELISA |

Product Details

| | |
|---------------|---|
| Immunogen: | The antiserum was produced against synthesized peptide derived from human PKC. |
| Isotype: | IgG |
| Specificity: | PKC-pan Antibody detects endogenous levels of total PKC protein. |
| Purification: | The antibody was affinity-purified from rabbit antiserum by affinity-chromatography using epitope-specific immunogen. |
| Purity: | > 95 % |

Target Details

| | |
|-------------------|--|
| Target: | PKC (PKC pan) |
| Alternative Name: | PKC (PKC pan Products) |

Target Details

| | |
|-------------------|--|
| Background: | Molecular weight of target protein: 76 kDa Synonyms: KPCA, PKC III, PKC-A, PKC-III, PKC-alpha, PRKACA, PRKCA, Protein kinase C, alpha type, kinase PKC-alpha PKC-delta, PRKCD, kinase PKC-delta, nPKC-delta PKC-epsilon, PKCEA, PRKCE, epsilon type, kinase PKC-epsilon, nPKC-epsilon |
| Molecular Weight: | 76 kDa |
| Gene ID: | 5578, 5579, 5580 |
| OMIM: | 176960 |
| UniProt: | Q04759 , P17252 , P05129 , Q05655 , P05771 , P24723 , Q05513 , Q02156 |
| Pathways: | Positive Regulation of Response to DNA Damage Stimulus |

Application Details

| | |
|--------------------|---|
| Application Notes: | WB: 1:500-1:1000 IHC: 1:50-1:100 IF: 1:100-1:500 ELISA: 1:5000 Optimal working dilution should be determined by the investigator. |
| Comment: | Unigene-Number: Hs.531704, Hs.708867, Hs.460355, Hs.155342, Hs.580351, Hs.631564, Hs.333907, Hs.498570, Hs.496255 (NCBI Gene Symbol: PRKCA) |
| Restrictions: | For Research Use only |

Handling

| | |
|--------------------|---|
| Format: | Liquid |
| Concentration: | 1 mg/mL |
| Buffer: | Phosphate buffered saline (without Mg ²⁺ and Ca ²⁺), pH 7.4, 150 mM NaCl, 0.02 % sodium azide and 52 % glycerol. |
| Preservative: | Sodium azide |
| Precaution of Use: | This product contains sodium azide: a POISONOUS AND HAZARDOUS SUBSTANCE which should be handled by trained staff only. |
| Storage: | -20 °C |
| Storage Comment: | Stable at -20 °C for at least 1 year. |

Validation report #103795 for Immunofluorescence (IF)

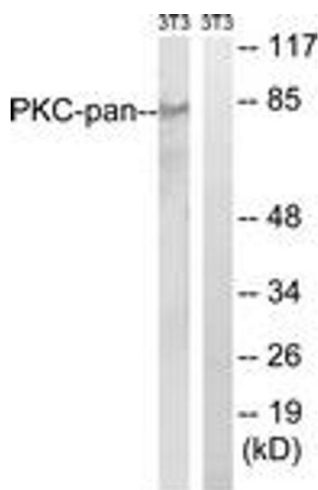
**Western Blotting**

Image 1. Western blot analysis of extracts from NIH-3T3 cells, treated with PMA 250ng/ml 15', using PKC-pan (Ab-Thr497) Antibody. The lane on the right is treated with the synthesized peptide.

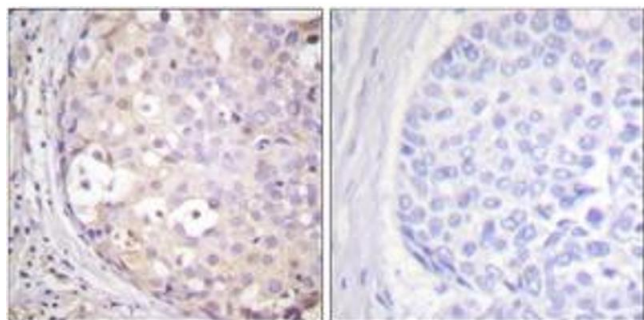
**Immunohistochemistry**

Image 2. Immunohistochemistry analysis of paraffin-embedded human breast carcinoma tissue, using PKC-pan (Ab-Thr497) Antibody. The picture on the right is treated with the synthesized peptide.

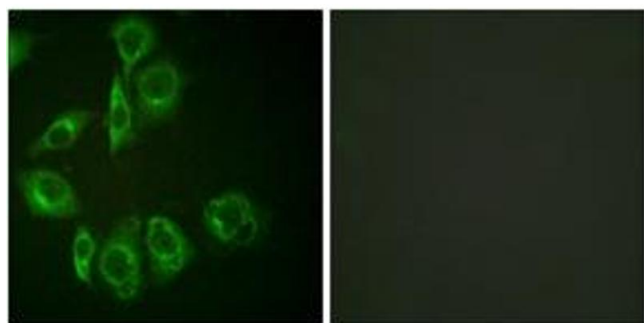
**Immunofluorescence**

Image 3. Immunofluorescence analysis of HuvEc cells, using PKC-pan (Ab-Thr497) Antibody. The picture on the right is treated with the synthesized peptide.