



Datasheet for ABIN1532526
anti-PKC mu antibody (AA 171-220)



[Go to Product page](#)

3 Images

Overview

Quantity:	100 µL
Target:	PKC mu (PRKD1)
Binding Specificity:	AA 171-220
Reactivity:	Human, Mouse, Rat
Host:	Rabbit
Clonality:	Polyclonal
Conjugate:	This PKC mu antibody is un-conjugated
Application:	Western Blotting (WB), ELISA, Immunohistochemistry (IHC), Immunofluorescence (IF)

Product Details

Immunogen:	The antiserum was produced against synthesized peptide derived from human PKD1/PKC mu.
Isotype:	IgG
Specificity:	PKD1/PKC mu Antibody detects endogenous levels of total PKD1/PKC mu protein.
Purification:	The antibody was purified from rabbit antiserum by affinity-chromatography using immunogen.
Purity:	> 95 %

Target Details

Target:	PKC mu (PRKD1)
Alternative Name:	PKD1/PKC mu (PRKD1 Products)
Background:	Synonyms: KPCD1, PKC-mu, PKCM, PKD, PRKCM, PRKD1, Protein kinase C, mu type, Protein

Target Details

kinase D, kinase PKD1, nPKC-mu
NCBI Gene Symbol: KPCD1

Molecular Weight: 101 kDa

Gene ID: 5587

OMIM: 605435

UniProt: [Q15139](#)

Pathways: [Myometrial Relaxation and Contraction](#)

Application Details

Application Notes: WB: 1:500~1:1000 IHC: 1:50~1:100 IF: 1:100~1:500 ELISA: 1:10000

Comment: Unigene-Number: Hs.508999 (NCBI Gene Symbol: KPCD1)

Restrictions: For Research Use only

Handling

Format: Liquid

Concentration: 1 mg/mL

Buffer: phosphate buffered saline (without Mg²⁺ and Ca²⁺), pH 7.4, 150 mM NaCl, 0.02 % sodium azide and 50 % glycerol.

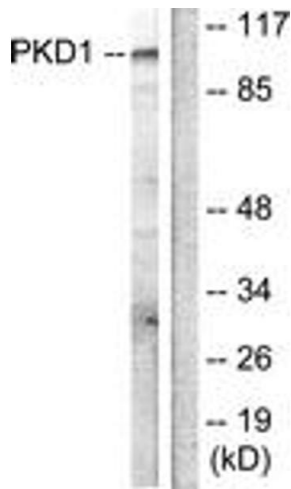
Preservative: Sodium azide

Precaution of Use: This product contains sodium azide: a POISONOUS AND HAZARDOUS SUBSTANCE which should be handled by trained staff only.

Storage: -20 °C

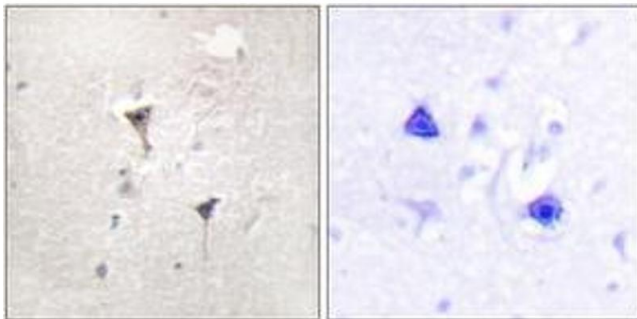
Storage Comment: Stable at -20°C for at least 1 year.

Expiry Date: 12 months



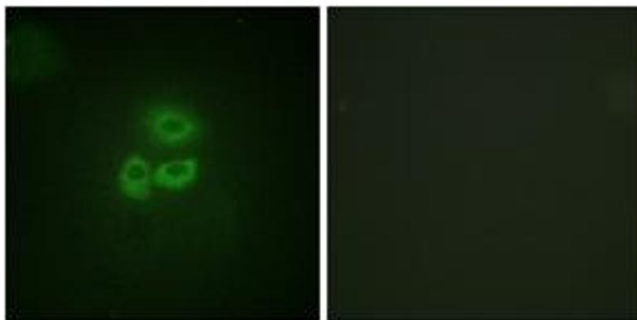
Western Blotting

Image 1. Western blot analysis of extracts from HuvEc cells, treated with PMA 125ng/ml 30', using PKD1/PKC mu (Ab-205) Antibody. The lane on the right is treated with the synthesized peptide.



Immunohistochemistry

Image 2. Immunohistochemistry analysis of paraffin-embedded human brain tissue, using PKD1/PKC mu (Ab-205) Antibody. The picture on the right is treated with the synthesized peptide.



Immunofluorescence

Image 3. Immunofluorescence analysis of A549 cells, using PKD1/PKC mu (Ab-205) Antibody. The picture on the right is treated with the synthesized peptide.